

# Our Country Home



Decorating & Renovating



# Our Country Home

TO SOME, A 1/4-INCH OFF  
MAY NOT SEEM LIKE MUCH.

TO US, IT'S FAILURE.

A quarter inch here, a quarter inch there could mean the difference between a structurally sound home and one that could end up costing you more money in the long run. With Barden Homes' cutting-edge panelized building technology, each wall and truss of your house is built in a climate-controlled setting and precision-engineered for a lifetime of trouble-free structural durability. It enables the builder to enclose your home much faster than conventional construction. Getting structures under one roof in a matter of days helps to avoid weather-related damages, job-site theft and fewer after-construction problems such as nail pops. And to us, that's a job well done. **Barden—Better. Faster. Smarter.**

## Vision Building Services, Inc.

**845-858-8604**

for more information

CALL TODAY FOR A FREE BROCHURE! 1-800-945-9400 OR 1-800-724-0141



 An Independent Dealer Featuring  
**barden**  
Better. Faster. Smarter.

HOMES • COMMERCIAL • CHURCHES

[www.bardenhomes.com](http://www.bardenhomes.com)



# Our Country Home

## Fall 2004



TRR photos by Michel Legrand

At the apex of John Roth's 1890's farmhouse in Milanville, PA is this attic, renovated with bold colors, sanded aluminum, wood and tile. The farmhouse, pictured on the front cover, is featured in "Living with a sense of play and possibility," which begins on page 17.

Each new season begins with the feeling of possibility. This is perhaps no more true anywhere than here in the Upper Delaware Valley and the Catskills.

We hope this issue of "Our Country Home" finds you with freedom to revel in the forms and colors of a country lifestyle.

The writers and people we have chosen to feature not only enjoy the lifestyle, as we all know it, they work to honor it, and resemble something of it in their work.

The voices of this section's articles seem to all set a common ideal: as we beautify our country homes, our choices should represent who we want to be. This could mean painting an interior room or some outdoor trim with a bold color, or choosing some bright-colored decorations or furniture for a room that's always seemed neutral.

It could mean refreshing the family room with a newly planted tree and rearranging the furniture to make space for it in the corner.

In putting it all together, the editors hoped you'd find on each page both enjoyment and useful information as you work to create your own exterior looks and interior environments.

Collecting some of the best examples of decorating and renovating in the region—the images and descriptions of which fill this special section—was only possible with help from many on the staff at **The River Reporter**.

Whatever you choose to do in the fall of 2004, we hope you enjoy it the most.

Charlie Buterbaugh  
Section Editor

**THE RIVER REPORTER**

Our Country  
**Home**

Publisher  
**Laurie Stuart**  
Section Editor  
**Charlie Buterbaugh**

Production Manager  
**Connie Kern**  
Production Assistants  
**Anne Willard**  
**Ralph Liberto**

Sales Manager  
**Danielle Gaebel**  
Advertising Sales  
**Eileen Hennessy**  
**Emily Bacchiocchi**

**Our Country Home**, a special publication of **The River Reporter**, is published by Stuart Communications, Inc. Entire contents ©2004 by Stuart Communications, Inc.

**The River Reporter** maintains an office at 93 Erie Ave., Narrowsburg, NY. Its mailing address is P.O. Box 150, Narrowsburg, NY 12764. Phone 845-252-7414. E-mail editor@riverreporter.com. **The River Reporter** is online at riverreporter.com.

Subscription to **The River Reporter** is \$53.00 for two years, \$30.00 for 1 year or \$21.00 for six months. USPS 354-810. Periodical postage paid at Narrowsburg, NY 12764, and additional mailing offices.

Publication date: September 30, 2004

## Inside this section

### Features

#### **5** Redefining perception with the help of an interior designer

In an interview with Charlie Buterbaugh, Bob Goldberg of Broadway Home explains the perspective an interior designer can deliver.

#### **9** The basics of green design

With the cost of energy going through the roof, find out the basics for sustainable building.

#### **11** Living in alignment

Sandy Long takes you on a journey to explore the true nature of living in your home.

#### **13** Fifteen decorating items for under \$20

Join Danielle Gaebel and Emily Bacchiocchi as they explore the decorating items available in the local market.

#### **14** Think safety first when renovating an old house

Think you want to jump right in and start sanding and tearing off panelling? Learn the beginning steps to ensure the safety of your older home.

#### **17** Living with a sense of play and possibility

John Roth, a designer who sees possibility in ordinary objects, takes Laurie Stuart on a tour of his Milanville farmhouse.

#### **21** Bringing in the green

Just because winter is coming doesn't mean you can't live with greenery. Nancy Fontenella shows you how.

#### **23** Building an entertainment center

If you live with a technogeek, you have to have a high tech room. Marcia Nehemiah's narrative mirrors the transformation of a porch into a high-tech entertainment center.

#### **25** Advertisers' List

There is a wealth of services and goods available in the Upper Delaware River Valley. This handy list sums it all up.

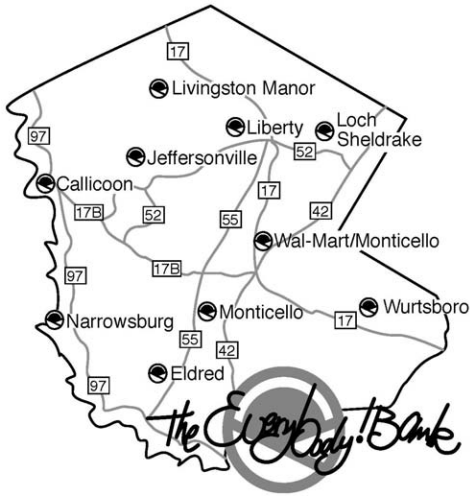
#### **30** Raising the roof

If the property is great, but you want a bigger house, consider expanding by replacing the roof with dormers and another story.



# Our Country Home

## Helping Sullivan GROW Since 1913



When you're ready to look for financing, see us first. Unlike most other banks and mortgage companies, The First National Bank of Jeffersonville offers financing on:

- Mobile Homes
- Second Homes
- Business Properties
- Restoration Projects
- Small or Large Parcels
- Hobby Farms

We know you'll be happy with our low closing costs, our competitive rates and our friendly, helpful staff. We pride ourselves on originating and servicing all our loans from the day you come in to fill out the application till the day you make the last payment.

Whether you're looking to finance your first new home, a vacation getaway or to open a new business, see us first.



[www.jeffbank.com](http://www.jeffbank.com)

**ON-LINE BANKING  
COMING SOON!**

Jeffersonville	845-482-4000	Livingston Manor	845-439-8123
Eldred	845-557-8513	Narrowsburg	845-252-6570
Liberty	845-292-6300	Callicoon	845-887-4866
Loch Sheldrake	845-434-1180	Wurtsboro	845-888-5890
Monticello	845-791-4000	Wal★Mart/Monticello	845-794-3988

### 24 HOUR ATMs IN ALL TEN LOCATIONS



# Redefining perception with the help of an interior designer

What a consultant can do for you

By CHARLIE BUTERBAUGH

**A**t the onset of any interior design project, regardless of scope, Bob Goldberg urges his clients to be honest about how they live.

And above all, he encourages homeowners to make commitments to what they like.

"The way people feel when they look their best—that's the same sensation they should feel in their homes," Goldberg said. "But 99 percent of the time people don't, often because they don't give interior design proper attention."

The designer recently toured a massive home with an impressive, lofty foyer and a side entrance that seemed like an afterthought. The home failed to fit the owner's lifestyle.

"Sometimes, homeowners don't live that way. They often use the side or rear entrance more often," Goldberg said. And yet these entryways often lead through laundry rooms or pantry areas.

"If you know you're going to be entering that space every day, why go through there?" he said.

"It's something that should be studied early in the process."

But from accessories and furnishings to the architectural arrangement and sizing of rooms, new homeowners often buy into what builders offer as standards, and trends like massive windows and large kitchens can lead people into trouble if living spaces are not designed for their best use.

Along with partners Stephen D. Thompson and Bill Morch, Goldberg opened Broadway Home in Monticello, NY in May 2004. The interior design studio doubles as a home furnishings retail store. Its parent company, Interior Design Force Inc., is located in New York City.

## The designer's role

One facet of a qualified interior designer's job is to ask questions of a client while "the program" is being developed, said Goldberg, a Syracuse University graduate certified by the American Society of Interior Designers. "The program," which can be described as the overall atmosphere of a room or entire home, is a product that grows out of discussions focusing on an individual or family's requirements of a particular living space.

"The more the client tells the interior designer, the better the project goes," he said.

"A client can't be wishy-washy. Otherwise the project will never



Bob Goldberg, owner of Broadway Home

TRR photo by Charlie Buterbaugh

happen."

Broadway Home can create a master plan that delineates design and decorating themes on paper. But varying levels of investment are available for consumers. Goldberg said he prefers to focus on one room fully than design a house one table and chair at a time.

The ladder of consultation options at Broadway Home begins with a one-and-a-half-hour session, beyond which is a design consultation for room layout, followed finally by comprehensive design services.

But one of the beauties of Broadway Home is its retail angle, which allows consumers to seek consultation when selecting from 1,500 styles of fabric and furniture, ranging from quick delivery to custom-made pieces.

The store's display styles include cottage, casual, Adirondack and contemporary, though others are available.

"I don't think the area warrants 18th century furniture. We can get it, but I don't think there's a market for that," Goldberg said.

He has lived in the area for 17 years, and while he believes Broadway Home's timing is about two years early in terms of the arrival of significant new home development in Sullivan County, Goldberg said he is

"here for the long haul."

"I've made this my interest," he said.

His philosophy is one that honors timeless design.

"Unless you can afford to be trendy, it's always best to go classic and timeless, like that classic black dress or navy suit," he said.

"People should do what they like, what makes them feel good.

"And people should not be afraid of color," he said.

If they are afraid, Goldberg suggests using color as a backdrop.

"Then, it's only paint on the wall. And it's not expensive to repaint," he said.

Or, he suggests using color on pillows or other accessories where it's a lot less expensive to change.

Continued on page 7



TRR photo by Danielle Gaebel

Bright-colored furniture and artwork stand out against the consistently neutral backgrounds in Broadway Home.



# Our Country Home

## • PREMIUM • WARRANTED • ENERGY EFFICIENT • HOME HEATING & COOLING SYSTEMS

**Honeywell**  
**Contractor Pro**

**Save Time** with the fastest lamp replacement on the market

**Worry-free sealed unit**

**3-Point Mounting System** makes this the easiest system to mount in the duct

**Proper Mounting Every Time** with the special interlock switch

**Safe Light Pipe** allows you to check lamp

**Easy installation in tight spaces** due to space-saving design and new low-profile door.

**Standard air flow switch**

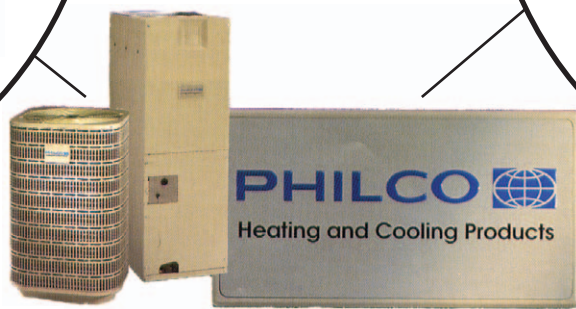
**Widely compatible**, the F150 works with all gas, oil and electric forced warm air furnaces, and with a wide range of air-conditioning systems.

**Offers high efficiency filtration** available from Honeywell. Captures up to 98% of E3 size particles and 93% of E2 size particles.

**An optional Air-Watch™ system** reminds customers of routine maintenance.

**Backed by 5 year warranty**

**Know that it's installed properly** before leaving the installation site with a new, easy-to-use test button.



**Damper Defrost** and motor; defrost package included with units

Fresh Air from outside is pulled into the unit

**Heat Transfer Core** transfers heating or cooling energy from outgoing to incoming airstreams

**Top Blower Wheel** and housing; units feature four speeds for specific demands

Stale air from inside is pulled into the unit

Stale air is deposited outside the home

Fresh Air is distributed throughout the home

*Your Philco Contractor, Narrowsburg Mechanical, will help you determine the ideal solution for your home while quickly getting you comfortable again.*

# Narrowsburg Mechanical, Inc.

Keeping your home cleaner, healthier and more efficient

5657 State Route 97 Narrowsburg, NY  
845-252-6735 • 1-866-788-4914

Serving the Upper Delaware River Valley





# Redefining perception with the help of an interior designer

Continued from page 5

## Two kinds of design

Goldberg explained the two sides of his profession: the first is interior architecture, which involves revising raw spaces conceived on paper by an architect, and then tailoring them to meet a homeowner's needs. Ceilings, walls and soffits are sometimes redesigned in this process, and moldings and other forms of detailing are often devised for the first time. Even lighting plans and electrical layouts can come into play with new construction and renovation projects.

The other, "softer" side of the profession is interior design and decorating, which involves any and all furnishings, such as window treatments, wall coverings, floor surfaces and furniture. Finer points in this school of design can take into consideration plants and appliances in relation to furniture.

Goldberg's key point of advice to homeowners seeking consultation on interior architectural design is to start the process early, which means showing a designer an architect's drawings before new construction or renovation begins.

"It's so easy to fix mistakes before you start building," he said.

Getting down to details as fine as the way a door swings is part of advance planning of the interior of a client's home.

Much of Goldberg's past experience as an interior designer falls within the hospitality industry, which has translated into his emphasis on durability and practicality in residential design.

People normally seek out an interior designer because they want help, or because they want to invest in the signature style of a particular artist, Goldberg said.

It is the designer's job to know a certain fiber's contents and to know what to use, and perhaps more importantly, what not to use. The designer knows how a client's chosen fabrics will look in a room once they are engineered as folded or draped window treatments. The designer knows how to mimic the architecture of a house when selecting furniture.

In new construction, and to some degree in renovation projects, interior architectural design involves the study of things like the positions of windows to help a client make the best decisions.

In many ways, Goldberg's message is about exploring options.

"Architects often work from the outside in, whereas interior designers always work from the inside out," he said.

He was recently "horrified" by how poorly the space was used in an enormous new kitchen. The cabinetry and pantry layouts created a poor use of space, he said.



In another home, a young couple's dream home, the owner wanted to create a table and seating area in the kitchen, but this was not possible with the given space, a problem that could have been prevented by changing the placement of a wall by two feet, if it had been addressed early in the process.

He recently had to design a custom king-size bed in order to fit in an oversized bedroom.

Goldberg's purpose is to help, guide and educate consumers. "Design should be a wonderful, educational experience. People should not be afraid. It should be enjoyable for the designer and the client," he said.

He said people must be honest and resist the fear of hurting a designer's feelings by saying, "I hate it."

Goldberg said the best types of clients are people who are willing to make a commitment.

"Means alone will not make a great project happen. A person needs commitment and dedication," he said.

Above: A country-French hutch is one of the first pieces that catch the eye in Broadway Home, located at 364 Broadway in Monticello.

Right: Adirondack design plays prominently into the furniture displays in Broadway Home.



TRR photos by Danielle Gaebel



# Our Country Home

Residential

Shop Online at  
www.supbldsup.com

**SUPERIOR**  
BUILDING SUPPLY  
"WWW.SUPBLDSUP.COM"

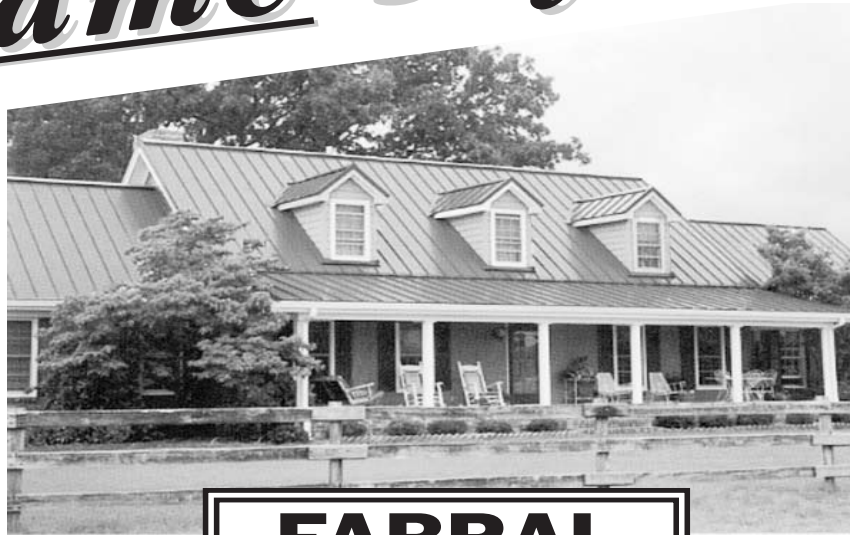
Commercial

Visit our new **Do it Best** Center  
**Our Name Says It All!**



### Carefree Quality Vinyl Decking!

Now there's a real alternative available. Our Carefree Decking System™, made of recycled plastic, is the maintenance-free material of choice for homeowners.



### FABRAL

#### Grandrib 3®

- 29 ga. industrial quality full hard steel
- Standard galvanized coating
- 15 Super Alurite® 25 colors

### NO MORE PAINTING BLUES!

You can forget about the back-breaking scraping, sanding and expensive painting required to maintain your home's exterior with quality siding products from Alside. Premium Vinyl Siding & Soffit™ are available in a variety of designs and colors to give you the look you've always wanted for your home. Alside products are covered by a Lifetime Limited Warranty.



**Alside**  
First On America's Homes



### Get The Strength & Security of Steel

- Premium steel doors feature a tough semi-gloss white finish
- Virtually maintenance free
- Revolutionary B15 door lite frame never needs painting and can withstand a storm door, sun exposure and dark-colored paints without cracking or warping

**THERMA TRU®**

Series 100 Series 1700 Series 1100



**SUPER SEAL VINYL REPLACEMENT WINDOWS**  
Custom made-for easy, snug fit!  
Call now for maximum SAVINGS!

Yes! you can install energy \$ savings 3 choices good, better, BEST!

**"CONTRACTOR" REFERRAL FOR ALL PROJECTS**

**STORE HOURS**  
7:30 am-5:00 pm Mon.-Fri.  
8 am-1 pm Saturday  
FREE DELIVERY  
845-985-7693  
Rt. 55 Mutton Hill Road  
Neversink, NY



# The basics of green design

## What is green design and why should you care?

Green design goes beyond being just efficient, attractive, on time and on budget. It is a school of design that cares about how such goals are achieved and how they affect people and the environment. An environmentally responsible professional makes a commitment to constantly try to find ways to diminish design's impact on the world around us. It is also a smart way of doing business: sustainable design is the fastest growing segment of the interior design industry.



TRR photo by Michel Legrand

Basically still undeveloped, and with an abundance of open space, wind and sun, the Upper Delaware is a natural for the exploration of alternative energy and green design building.

## What are sustainable design's key issues and common misconceptions?

It is more expensive than other types of design.  
Not necessarily.  
There are not enough materials to work with.  
There are plenty, and new ones are launched every week.  
Nobody is interested in green.  
From people concerned about the environment to families with sick children to businesses worried about pollution and lawsuits, more and more potential customers are inquiring about, and requesting, sustainable design.

## What makes a project or a building green?

A sustainable approach to design should create buildings and interiors that:

- Are healthier for people and enhance productivity.
- Can be built at market rate and cost much less to operate.
- Use less fossil fuels and thus conserve energy, generating less global pollution and saving on operational costs by requiring less maintenance.
- Use less water.
- Manage waste at the highest productive level, reducing impacts on both developed and undeveloped land.
- Minimize the use of materials, and use materials with the lowest environmental impacts.

## Why become a green designer?

The number of sustainable design projects continues its fast increase, due in part to the phenomenal growth of the U.S. Green Building Council, a body

comprised of architectural and engineering firms, design firms, contractors and developers, federal, state, and local government agencies, and professional associations like the American Society of Interior Designers. Today's designers find themselves with a significant professional opportunity: to specify and build healthy buildings and interiors using environmentally friendly products and materials that have a healthy impact on clients and the planet.

## What is LEED and why should I know about it?

As with any design specialty, green design needed its own standards. Leadership in Energy and Environmental Design (LEED) is a voluntary, consensus-based collection of national standards for developing high-performance, sustainable buildings and interiors. LEED has become increasingly recognized by professional designers as a complete framework for assessing building performance and meeting sustainability goals.

There are currently four available LEED standards:

- LEED-NC (version 2.1) for new construction and major renovation projects.
- LEED-EB (pilot version) for existing building operations and maintenance.
- LEED-CI (pilot version) for commercial interiors projects.
- LEED-CS (pilot version) for core and shell projects.

LEED for Homes is expected to become available for pilot projects in late 2004.

[Source: The American Society of Interior Designers]

## FRANK SMITH & SONS

Established Since 1961

**WELL DRILLING  
PUMPS & WATER SYSTEMS  
SERVICE & REPAIR**

**Rotary Driller and/or  
Pounder Driller**

130 Matt Smith Road • Cohecton, NY 12726  
845-252-6642 • Fax: 252-3810

**SERVING THE TRI-STATE AREA  
FREE ESTIMATES • FULLY INSURED**

**BUCK MOORHEAD, ARCHITECT**  
RESIDENTIAL • COMMERCIAL

SUSTAINABLE DESIGN • RENOVATIONS  
NEW CONSTRUCTION • LAND PLANNING

CALLICOON, NY • 212-343-2735  
BUCK@BUCKMOORHEADARCHITECT.COM

Industrial • Residential • Commercial  
**AMERICAN ELECTRIC, LLC**

Serving Sullivan County  
FULLY INSURED

SULL CO. LICENSE #273 NJ STATE LIC.#12380

**24 HOUR EMERGENCY SERVICE  
Bucket Truck Service**

M.Popolillo

845-932-8111 • 845-583-1015

Lake Huntington, NY  
www.AmericanElectricOnline.com

**BIG ED FITZPATRICK'S  
SMALL EXCAVATING, LLC**

Septics • Driveways • Grading  
Foundation Repairs • Concrete Pads • Drainage  
Small Building Demolition • Retaining Walls

TRY THE SMALL GUY, HE'S CHEAPER AND TIDIER

~ Call Ed ~

Home 845-794-5074 • Cell 845-866-3173



# Our Country Home

## Barryville Realty

1-800-REALTY2 • 1-845-557-6677  
GREAT HOUSE — FROM FRONT OR BACK!



Dutch colonial located in Liberty area, 2800 sq.ft., 3 bdrm, 1½ ba, attached 1-car garage, H/W b.b. heat, full basement, many more amenities. \$199,000

Call for more listings!

Geba Realty • 845-856-6629 • www.gebarealty.com

Serving your Real Estate needs in NY, NJ and **NOW** in PA!  
Please call us to list your PA home!



### Immaculate Country Ranch!

This great country home offers LR w/ fireplace, DR, country kitchen, 3 bdrms, 2 baths, large rear deck, and more on 2+ acres with separate LAKEFRONT PARCEL W/ DOCK! \$275,000



### LAKFRONT CAPE COD!

This spotless Cape Cod home offers LR w/ fireplace, DR, kitchen, 3/4 bdrms, 1.5 baths, sitting room, enclosed porch, garage and boat storage garage and LAKEFRONT VIEW & DOCK! \$269,900



### Brand New Cape Cod!

Room for everyone! This large home is being built & will offer LR, DR, kitchen, 4 bdrms, 4 baths, full finished walkout basement, wrap around porch, landscaping & more! Attention to detail makes this a wonderful country home! \$299,900



### LARGE GLEN SPEY HOME!

Bring the family home! This large home features LR w/marble fireplace, DR, kitchen, 3/5 bdrms, 3 baths, covered porch and much more! Call today! \$229,000

## McKean Real Estate

Serving New York & Pennsylvania

Lake Front Homes • Country Homes  
Residential & Commercial  
Farms • Acreage  
Leaders in Waterfront Property

www.mckeanrealestate.com

845-557-8338  
845-583-6003

Barryville, NY



## ✓ HOUSING HINTS

If you're thinking about building or remodeling, protect yourself and your investment. Check us out first.  
"Building Today for a Better Tomorrow"

Sponsored by:

PIKE COUNTY  
BUILDERS ASSOCIATION  
570-296-5589



www.pikecountybuilders.com

## Selling Your Home? Looking for a Special Place in the Country?



## KLIMCHOK REAL ESTATE

Serving the Upper Delaware River Area  
(New York & Pennsylvania)  
for over 40 years

"Professionalism with Heart"

Visit our website: www.klimchok.com or stop by...  
across from the Train Station in Callicoon... the little red building  
by the railroad tracks. Call us at 845-887-4444.



## Preferred Homes & Properties



Serving all of Sullivan County when buying or selling a quality home or property.

**Diane S. Deutsch, Licensed Real Estate Broker**

3995 State Route 52, Youngsville, NY • 845-482-4300 • Fax: 845-482-4433  
Email: prefhp@catskill.net • Website: www.preferredhomes.net



### CHARMING 1890's FARMHOUSE

Take in the view from the rocking chair porch. Wide plank floors, 2 woodstoves, new furnace. Great year-round getaway. 3 miles from future Performing Arts Center in Bethel. Additional acreage will become available. **Reduced, motivated seller \$189,900**



### NEAT 3BR/2BA "RETRO RANCH"...

...on 41 private acres. Situated on quiet dead-end road, beautiful views, trails for hiking, x-country skiing, etc. Subdividable. Home meticulously maintained. Charming guest cottage. **Great property \$350,000**



### EXCEPTIONALLY CHARMING...

...Cedar home privately set on 1.6 acres overlooking quiet lake. 5 BRs, 2000+ sf, stone wall w/FP, pegged, wide planked HW floors, curved cedar & beamed ceilings, bay windows in every room & skylites let the breathtaking outdoors in. French doors lead to tiled solarium which also overlooks lake, lots of decking. New: roof, hot water heater well pump, driveway & landscaping. Dock on lake off front yard. Perfect year-round enjoyment. **\$399,000**



### SIT ON YOUR DECK & ENJOY...

...Fabulous views overlooking lake. Cozy 2 BR cedar-sided house w/large family room, W/S. There is another 720 sf structure (shell) to expand to living space—guest quarters, studio, etc. Many fruit trees. Walk to future Bethel Performing Arts Center. **Only \$275,000**



### SOLID BEAUTIFUL BRICK...

...ranch in convenient location set up as mother/daughter (sep. apt. LR, EIK, 2BR, bath), could easily be converted to one. HW & bluestone flrs, frosted, etched & stained glass, French & pocket doors, sensor lights, metal roof, lrg. encl. patio, playhouse. Also a great location for home business. **Reduced for quick sale. \$179,900**



### BEAUTIFUL 4 ACRE...

...parcel w/ spectacular view & waterfront all ready for your dream home. There exists (2) 1000 gal. septic tanks, drilled well & 2-story, 2-car garage. **What a deal! \$75,900**



### FABULOUS 1840's STONE FARMHOUSE...

...with all its original charm & detail has been beautifully renovated w/modern conveniences. Kit has complete "green" renovation w/handmade custom cabinets. FR features stone wall w/ RAIS woodstove & beamed cathedral ceilings. Wideplank hemlock & butternut floors throughout, wide wainscoting in formal DR, cozy library, stone walls 30" thick and wraparound & rocking chair porches overlooking stunning long range views. There is also a working barn w/ hayloft & storage, carriage house, ice house & various outbuildings all adding to the charm of this fabulous property. There is also a wonderful heated studio & 2-car garage. **Truly a one-of-a-kind property. \$539,900**



# Living in alignment

By SANDY LONG



Our country homes are the foundation for our country lives. From these shelters we emerge into the natural world; to these shelters we return, taking refuge.

Within these spaces and places, we carve lives aligned more healthfully with the seasons and their gifts, awakening our senses and taking seasonal foods into our bodies for hearty sustenance.

As we advance into autumn, we stuff our root cellars with tubers, freeze or can or simply consume all we have gathered during the seasons of abundance. We see the red orbs tugging at the arms of the apple trees and head into the orchard, weaving our own limbs into the canopy of leaf and gnarly bark. We fill a bag or bushel to the brim and arrange the juice-heavy shiners in weathered wooden bowls inside our homes; seeing them there we remember summer's days of green growth. Picking one up and breaking its crisp skin, we take in the sun and the rain and rebuild our very cells with this wondrous thing.

Our minds, too, are stocked with ample images and experiences accumulated during the celebratory seasons of spring and summer. As fall fades, and with it our penchant for outwardness, winter douses us with flake and wind gust, slows us with falling temperatures and ice. We light fires to ward off the encroaching chill, huddle close and sip warm liquids as we talk of the changing colors, the busy squirrels gathering acorns and the darkening coats of deer.

Our bones stiffen as we move inward, finding ourselves with more time to simply be in our country homes, to tarry a little longer under warm blankets, to rest in that coddling chair we bought as we dreamed of how our country lives might transpire, to crack the spine of that frayed book we neglected all summer as we traveled, tended gardens, turned our efforts to projects and plans.

Our country homes, whether pri-

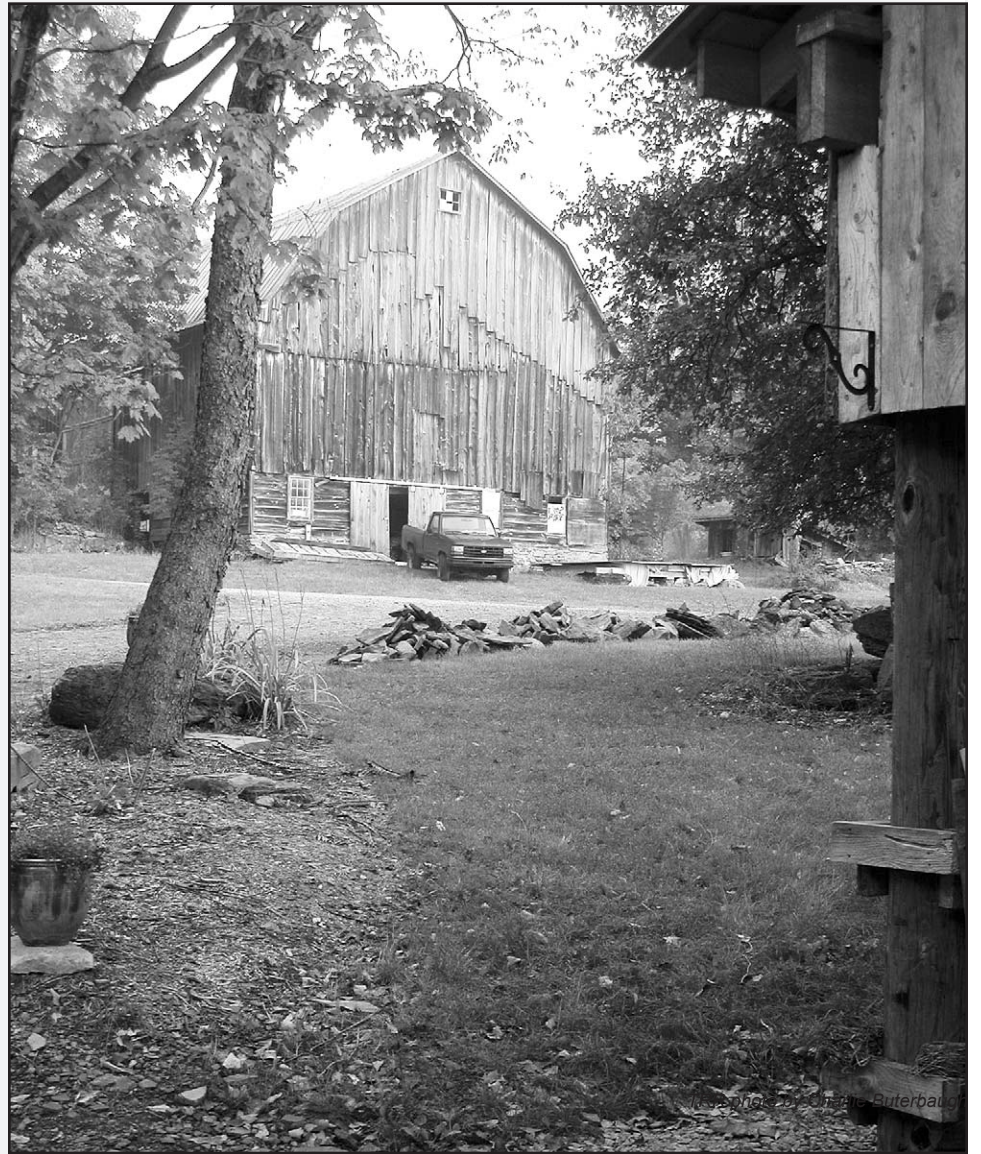
mary, secondary, or something else altogether, offer opportunities to seek balance in our lives, to engage with the natural world's seasonal expressions. Become aware of your home's relationship with the six directions anchoring our sense of place and framing our experience. In which direction does your home face? From which direction does light enter it? How does light move across the site where your home sits?

Such factors affect heating and cooling costs, gardening and landscaping possibilities, even physical and emotional well-being, as light funds a critical process taking place in the pea-sized pineal gland located deep within our brains. Serotonin is produced here, stimulated by light entering through the eyes and affecting various functions from digestion to mood to blood pressure. The winter months of low light result in serotonin drops, thought to be the source of Seasonal Affective Disorder (SAD).

Balanced living calls for increasing our exposure to light and upping our activity levels. As the cooler seasons progress, the prescription for our well-being is written thus: bundle up; get out into the air and sunshine; move with enough vigor to create a stir within the body. In doing so, we raise oxygen levels in our tissues, strengthen muscles, increase our life force ("chi") and help to restore balance to lives depleted by stress and busyness.

Invite air into the house and let stale energy out by occasionally opening windows and doors. Double-dose this healthful effort by performing vigorous chores like vacuuming and dusting while the house is opened up. Grace your living space with natural artifacts—a fallen feather, an elegantly simple branch, a river-colored rock—and bring the outdoors in.

Build reflection into your days, lending thought to what lies below your home—groundwaters moving through purifying layers of earth, recharging wells and cleansing our cells as we wash up and drink down. Observe what arcs overhead on a given day. How do the clouds move across your country



The Hemlock barn is one of the central features of the Endless Mountain Farm, located in Susquehanna County, near Union Dale, PA.

place? From which direction does the wind most often come? Where is your widest view of sky and what's going on in the treetops above?

We value our country homes for what they allow us to escape—the rush and crush of city lives, the pressures and routines of earning livings, the places where environments are beset with damages. And we cherish our country homes for what they allow us to touch—stimulating air freshened by mature trees and fragrant undergrowth, delicious pure waters that hydrate us and float us and help us to forget the odor of chlorine in the steam of urban showers; boulders and bluestone that shape walkways and walls; birds,

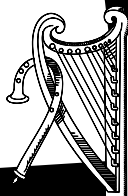
mammals, amphibians, reptiles, fish and insects appearing at the edges of forests, pooling in ponds and boggy lakes, even creeping into our dreams; the acidic earth that births our hemlocks and oaks, highbush blueberries and ferns, mosses and lichens and mountain laurel.

In seeking balance, look to the seasons and their cycle of birth, growth, decline and death and see reflected the progression of our human lives. Living in alignment with natural processes and principles brings us back into balance. In our country homes, we can reawaken a sense of wonder at our lives and how we live them.

## Michael Parker Custom Carpentry

Specializing in  
Remodeling • Finished Basements  
Additions • Custom Decks  
Replacement Windows & Doors • Trim

Shohola, PA  
570-559-7583



"WE DO IT RIGHT THE FIRST TIME."

Building a Better Home

Specializing in  
Custom Built Homes

We offer quality  
construction that you  
will be proud of.

Terry Tenbus  
99 Parker Road  
Narrowsburg, NY  
845-252-3500



# Our Country Home



## JMR Construction

New Homes • Custom Renovations • Decks • Siding

Fully Insured

**570-559-7935**

**Joe Riccardi**  
Shohola, PA



Sean Boyes  
Jesse Noren  
Joe Noren

845-295-5462  
845-985-2147

## Boyes & Noren Construction Home Improvement

Vinyl Siding - Seamless Gutters  
Replacement Windows - Roofing - Decks  
Metal Roofing Specialists

Fully Insured  
Free Estimates

Aden Rd • PO Box 651  
Neversink, NY 12765

### HOMEOWNER & CONTRACTOR RENTALS

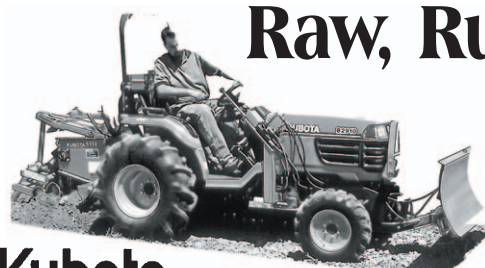


Skid Steers • Backhoes • Loaders • Dozers • Landscaping Equipment  
Excavators • Power Tools • Masonry Tools • Dump & Utility Trailers  
Man & Material Lifts • Plumbing & Heating Tools  
Liberty, NY (Across from Liberty Pet Center)

EXCLUSIVE  
DISTRIBUTOR FOR  
**arxx**  
BUILDING PRODUCTS

**845-292-6338**  
**FREE LOCAL DELIVERY**

PUT OUR NUMBER IN YOUR PHONE BOOK NOW SO YOU HAVE IT WHEN YOU NEED IT



## Raw, Rugged Power

...that's Kubota

**Kubota**

Kubota's B2910 Premier 'Plus' compact tractor features increased horsepower (22 PTO HP), heavy-duty construction and easy operation for nursery work, light constructions and farm chores. Powered by a quiet-and-clean Kubota E-TVCS diesel engine, the B2910 Premier 'Plus' features deluxe cruise

control, high-performance power steering and increased hydraulic power.

The B2910 has an adjustable deluxe seat and a backlit instrument panel for easy day/night monitoring. Three-speed ranges, a dual pump hydraulic system and rear and mid PTO are standard.

A powerful Category 1, 3-point hitch handles a variety of performance-matched implements. For greater lift capacity, the performance-matched LA402 loader is easy to operate and is compatible with either 60" or 72" mid-mount mower.

For a rugged, powerful tractor that works as hard as you do, see the Kubota B2910. **K**

**MARSHALL MACHINERY INC.** Route 652 • Honesdale, PA • 570-729-7117



**THE GLACIER PLOW**  
**MAKE SHORT WORK**  
**OUT OF EVERYTHING**

DRIVE INTO PLOW SYSTEM.....(5 SEC.)  
ATTACH POWER CORD.....(5 SEC.)  
ATTACH LIFT CABLE TO PLOW.....(5 SEC.)  
TOTAL TIME.....(15 SEC.)



**POLARIS**  
The Way Out.

www.polarisindustries.com

**BILL CASE SALES & SERVICE**

Welcome Lake, PA • RD1, Beach Lake, PA  
570-729-7402 • www.billcase.com

## WINDOW OF OPPORTUNITY...



  
Equal Housing Lender  
Equal Opportunity Lender

With **MORTGAGE** and **HOME EQUITY RATES** still near historic lows, now is a great time to buy, build, improve or refinance. Talk with a friendly Wayne Bank professional at any of our Community Branch Offices, today!

Helping the Community Grow



**Wayne Bank**

A Subsidiary of Norwood Financial Corp

Member FDIC

**(800) 598-5002 • www.waynebank.com**

Honesdale • Waymart • Hawley • Milford • Hamlin • Shohola  
Lakewood • Stroudsburg • Lords Valley • Marshalls Creek



# 15 Decorating ideas for under \$20

Sales manager Danielle Gaebel and Sales Consultant Emily Bacchiocchi selected these 15 items from the shelves of the various retail establishments.



Mums \$5.25 from Pat's Farm Market



Candle Pie Slices \$5 each  
The Secret Garden



Metal duck on skis; marked "Produx Saint Hilaire, France" \$19  
Cedarwood Emporium



Vintage Liquor Holder \$15  
Cedarwood Emporium



Leather-look Frames 8" x 10" \$16  
8" x 8" \$12 orange, pink or green  
Global Home

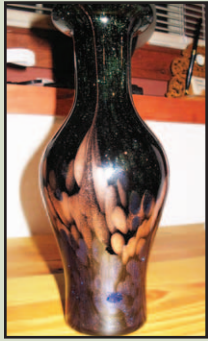


Photo far left: Wine Bottle Holder \$18;  
photo left, Glass Vase \$18  
CGM Curious Goods



Photo left: Decorative glass pieces \$18 to \$20  
The Secret Garden



Photo right: La Cucina Oil Bottle & two dipping dishes gift set \$20  
The Secret Garden



Storage Tins: Large round cookie tins \$18 each; small square odds-ends tins \$5.00 each; round serving trays \$18 each  
Global Home



Jonathan Adler ceramic olive boats \$12 each  
Global Home



Monkey Wood Tray \$20 / bowls \$7  
Upriver Home & Garden



Hand Thrown Pottery Bowl \$12  
Upriver Home & Garden



Polka Dot FireKing bowl, circa-1950's  
USA \$10  
Cedarwood Emporium



Stainproof plastic pitchers \$17.50 each  
Atomico & Rococco Melamine Plates \$6 each.  
Melamine Cups \$3 each  
Global Home



# Think safety first when renovating an old house

By LAURIE STUART

Congratulations, you have just purchased a beautiful old farmhouse.

While you might have dreams of refinishing the wide plank floors and uncovering antique wainscoting, the first thing you have to renovate and upgrade is the electrical system.

The two most important areas to update and upgrade include the service coming into the house and the individual circuits going from the panel to the respective rooms.

Older homes were typically wired when electric appliances were not as commonplace. Back in the day when your house was built, people were simply lighting a lighting circuit. But modern-day conveniences of televisions, computers, toaster ovens, air conditioners and a multitude of state-of-the-art appliances draw more watts and amperage.

The second most important system to upgrade is the mechanical, which includes the heating and hot water systems. The same type of reasoning applies—heating systems installed in a house 50 or 60 years ago are not going to have the energy-saving burners available today. The units themselves might not be as well insulated, and if you find a steam system in your basement, previous

owners probably removed the old asbestos insulation, leaving uninsulated pipes, which cause tremendous heat loss.

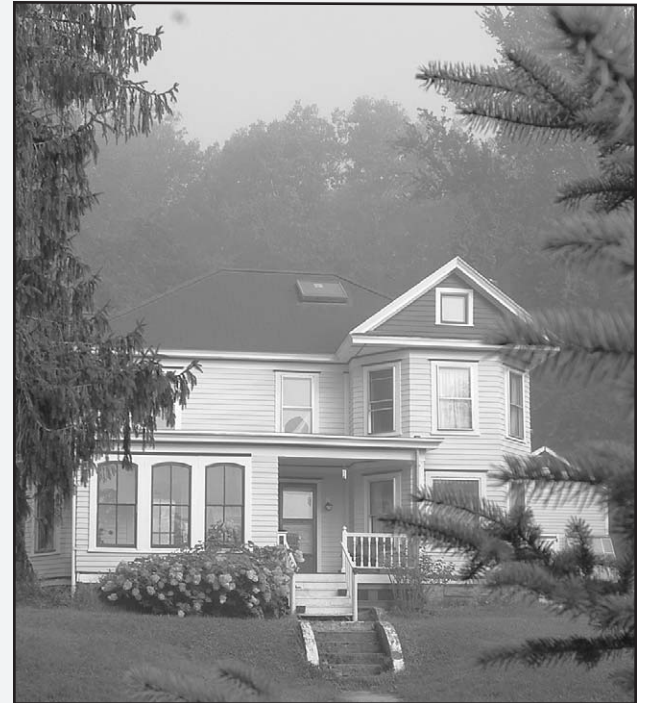
Beyond these two important systems, you want to make sure that each bedroom has a smoke detector.

After you have taken care of the safety issues that will protect your investment from fire and excess heat loss, you then need to consider what you want to achieve. Do you want to beef up your energy profile to save energy? Innovative and technologically advanced insulation products are available, including reflective and radiant barrier insulation. With fiberglass-backed insulation, it's fairly easy to upgrade an older home to meet today's insulation values.

Replacing windows with a minimum of a double-pane glass is another way to achieve energy efficiency. And insulating your hot water pipes is yet another method of conserving energy.

For health reasons, if the house has a forced-air heating system, the ductwork should be cleaned and sanitized.

And it is in this energy-efficient, safe home that you will be able to comfortably scheme how to bring your traditional Upper Delaware farmhouse back to its former glory.



TRR photo by Michel Legrand  
Turn-of-the-century farmhouses like this home on Route 371 in Damascus, PA dot the hillsides of the Upper Delaware.





**MAJOR APPLIANCES • LUMBER • PLUMBINGELECTRICAL • RENTALS & MORE**

**“As always, free delivery and great service”**

Kitchens • Major Appliances  
Benjamin Moore Paints • Rental Equipment  
Quality Building Materials • Lawn & Garden Supplies

Route 6 & 209 • Milford, PA  
570-296-7012 • Fax 570-296-5791

## Clear-Rite Pools & Spas INC.

- ♢ CUSTOM IN-GROUND BUILT POOLS
- ♢ VINYL LINER SPECIALISTS
- ♢ HEATERS, PUMPS & FILTERS
- ♢ RENOVATIONS
- ♢ OPENINGS & CLOSINGS
- ♢ WEEKLY MAINTENANCE
- ♢ SARATOGA SPAS
- ♢ ABOVE-GROUND POOLS AND SUPPLIES



**WATERFRONT PROPERTY IN YOUR OWN BACK YARD**  
845-482-4646 • Youngsville, NY

# Braverman

## Custom Cabinets and Interiors

Kitchens  
Libraries  
Built-in Units  
Vanities  
Custom Windows & Doors  
Stone Counter Tops

570-729-0000

## SUPERIOR QUALITY



**With Low Interest Rates... You Can Qualify For A More Luxurious Home!**

*Options: Jacuzzi in bathroom • Fireplace • Turned oak staircase, ceramic and wood floors*

**Now You Can Afford These And Many More Options!**

Every dollar you save on interest rates can be converted into more options and upgrades to create the luxurious home you've always dreamed of owning. Visit our model and work with the experts. We'll show you how you can build a bigger, more comfortable home by taking advantage of today's low rates.

“QUALITY WILL BE REMEMBERED... PRICE WILL BE FORGOTTEN”

**Quality Crafted Homes**

Financing Provided by



Owner/Office Manager: Debbie  
(845) 252-7301 • Fax (845) 252-3544  
325 County Road 25 • Narrowsburg, NY 12764

Authorized Builder  
**WESTCHESTER MODULAR HOMES, INC.**

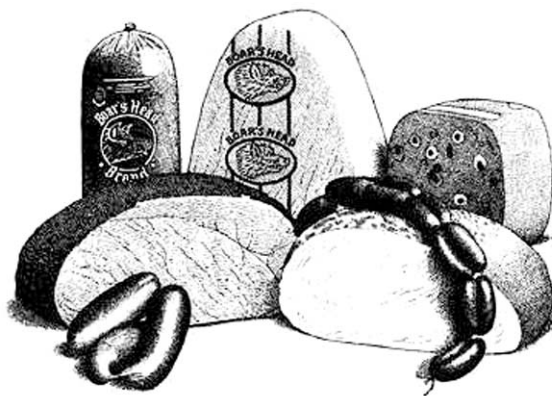




# Demand the Brand.



## Boar's Head



**Ask for it by name  
at all 5 Peck's Market locations.**

- **Callicoon**  
845-887-5090
- **Jeffersonville**  
845-482-3800
- **Narrowsburg**  
845-252-3016
- **Eldred**  
845-557-6315
- **Livingston Manor**  
845-439-4091





# Our Country Home

## HONESDALE OFFICE

100 4th Street • Honesdale, PA 18431

Tel: 570-253-5302

WEB: www.goldcrealty.com

## TYLER HILL OFFICE

Route 371 • Tyler Hill, PA 18469

Tel: 570-224-7653

WEB: www.thpagoldc.com



### LAKE RIGHTS / LAKEFRONTS / VIEW LOTS

1. Fawn Lake building lot, walk to lake, all amenities: Reduced to \$10,900 #4984
2. Paupack Lake Est Lot, lake rights, amenities: \$9,000 #4972
3. Tanglewood Lot, lake rights, amenities: \$23,500 #4998
4. Duck Harbor Lots: 5 AC + avail, lake rights, abuts gamelands, \$65K-\$67
5. Beaver Lake Est lot, 3.88 AC, wooded/open, lake rights \$69,000 #2608
6. Woodledge Lake double lot, 1 AC, lakefront! \$99,500 #4995



### Sweet Serenity Price Reduced to \$399,000

3.65 acres with woods and stream, located in the heart of PA, this 3 bedroom, 3 bath home offers contemporary magnificence. Cedar & pine interior, wood floors, dramatic windows, a wooded paradise and in perfect shape—because it's NEW. MLS 4999



### Quiet Setting \$189,900

2.4 acres of privacy located on a quiet private lane with 4 very large bedrooms, 3 baths, with a second well and septic waiting for a guest cottage or workshop. Large deck overlooking your private acreage, minutes to Delaware River and close to Delaware River village. MLS 2619



### 25 Gorgeous Country Acres \$175,000

Quiet area, close to river village for services and entertainment, this property offers woods and lovely open fields, very private and ready for a dream home for retreat, hunters, sportsmen, or family recreation. MLS 2515



### Fly Fishing Paradise \$337,000

A newer Contemporary spacious home, with all the amenities and dramatic design, 3 bedrooms, w/ master suite & cedar bath, 2.5 baths, lovely custom kitchen, spectacular view of woodesdyard and rushing stream, 2 woodstoves, elevated deck, glorious hot tub under the trees, all located on a quiet country road. MLS 2598



### A Dutch Treat \$169,900

A large floorplan offering 3 bedrooms, 2 baths, formal dining, eat-in kitchen, huge livingroom, family room with coal stove, shop and storage in basement, decks, view of local countryside, also a bonus of 1 bedroom apt over 2 car heated garage, apt has separate septic too! Very private, minutes to Honesdale, close to all services! MLS 4976



### Honesdale Early Beauty \$159,900

A 5-6 Bedroom boro colonial, close to everything, super nice home with large eat-in kitchen, formal dining with woodstove, livingroom, 2 bedrooms on main floor, and 4 upstairs, very nice corner lot with parking both sides and 1 car attached garage, a wonderful in-town home. MLS 5000



### Renovated and Elegant \$199,900

Recently renovated, this lovely ranch offers 4 bedrooms, a new kitchen, new paint, wood floors, stone fireplace, 6.75 acres with gorgeous views of local rolling country, an attached 2 car garage, family room, located on a good road near state gamelands and state fishing lakes! MLS 4992



### Country Cutie \$92,000

All new carpet, new lino, new roof, wonderful local views, still needs some final touches, but a very cute home with 2 bedrooms, loft, 1 full acre with private pond, a terrific starter or retirement home! MLS 5008



### Own Your Dream \$198,500

A private haven with pond, lovely views, 5 full acres of open and woods, detached garage, shed, and 3 bedroom 2 bath ranch, minutes to gamelands, state fishing lakes, Delaware River, and 15 minutes to Honesdale. A lovely area for recreation and privacy! Horses welcomed! MLS 5019



### Huge Boro Home \$89,000

3 to 4 bedrooms with 1.5 baths, garage, central water and sewer with new roof in 2000, enclosed porch, lots of rooms and space for everyone, storage shed, in a great central location to all services and conveniences. Priced for fast sale, great investment potential too! MLS 5004



### Stately Expanded Cape \$539,000

Incredibly well built custom home with 4 bedrooms 3.5 baths, spacious living room, eat in kitchen, large family room, lovely wood floors, in-floor radiant heating, 10 zone baseboard heating, too many features to list, a must see! Hidden within the seclusion of Northeast PA's gamelands, this parcel offers privacy and quiet comfort, walk to 9,000+ acres of gamelands and state fishing lakes. A dream that should be yours today! MLS 5016



### A Country Hearth Awaits \$325,000

Lovely open floorplan, spacious rooms, great entertaining, 4 bedrooms, 3 baths, full basement, wonderful brick hearth with gas-burning stove to add warmth and atmosphere to any winter day! Immaculate condition, nestled within a wooded hillside, this 18 acre property is at the end of a private lane and offers total privacy and all the modern conveniences. Close to the Delaware River, state gamelands and fishing lakes, this property is a steal at this price! MLS 2603



### Pine Grove Beauty \$192,000

Lovely ranch on over 1/2 acre with stonewalls, privacy, local views, large floorplan with 2 bedrooms on main floor, huge family room and guest room lower level, located at the end of a cul-de-sac, also offers large deck, extra sized garage, lots of space! MLS 2621



### Crisp & Clean Cape \$125,000

Charming 3 bedroom 1.5 bath home with hardwood floors, high ceilings, lovely original trim and stairwell, covered front porch, large back deck, quiet and private yard, 1 car garage, walk to village of Beach Lake, very close to water park, restaurants, and services & minutes to Delaware River public access. MLS 2602



### Hidden Acres & More \$320,000

20 fabulous acres or open and woods, with views and total privacy! This ultra modern 3 bedroom 2 bath manufactured home offers a stunning interior, lovely custom kitchen, living room, family room, large work garage/barn with elec and water, perfect for horses or mechanics! This property is just so private and secluded, a perfect get-away with all conveniences! MLS 2610



### Mountainside Magnificence \$359,000

Spectacular views from this 4 bedroom, 2 bath home, with state of the art master bath and suite, gorgeous arched brick hearth and 2 woodstoves, so lovely, the interior will captivate you move right in! Immaculate condition, nestled within a wooded hillside, this 18 acre property is at the end of a private lane and offers total privacy and all the modern conveniences. Close to the Delaware River, state gamelands and fishing lakes, this property is a steal at this price! MLS 2603



# Living with a sense of play and possibility

By LAURIE STUART

**J**ohn Roth likes to take a found object and present it in a different context. When an ordinary object is presented in an unusual manner, the viewer has a chance to see it in a context different from the way in which it is normally seen.

A long-time carpenter, Roth is uncovering the artistic, creative side of his work. The results are quirky, fun and evident in every corner of his house. Roth utilizes pool balls as drawer handles, and he has re-fashioned an old sled into a pot rack. A wire strainer filled with glass knobs, wired into a light, illuminates a corner of the kitchen. The chairs around a plain wooden table are brightly painted and subtly stenciled.

The outlandish meets the practical in perfect symmetry.

Outside, a funnel tops a fence post in one place, and a painted glass dome adorns another.

"When I look around [at different objects], I see possibilities. I don't necessarily say that this will be a pot rack. I see them as interesting objects. But I don't necessarily know what I am going to do with them."

This phenomenon of seeing different possibilities is not something that Roth has always done.

"It's when I bought this house about 12 years ago that this began to flourish. Being a carpenter and working for years on other people's houses, I really wanted to have a house of my own. It gave me a chance to do what I wanted to do," he said.

And fortunately for Roth, the inside of his small 1890s farmhouse, on the banks of the Calkins Creek in Milanville, was pretty much undefined.

"The house had some nice woodwork on the outside. The inside did not have a style; it didn't have any chestnut woodwork that I had to be faithful to. I could do what I wanted to do without betraying some sort of architectural style," he said.

"I like color. I used to have more of a traditional sense. Working with wood, everything had to be natural. But there is so much you can do with color."

From bright yellow and orange walls to a deep red kitchen ceiling, Roth's use of color adds a delightful dimension to the farmhouse's interior.

"The great thing about paint is that you have wide latitude to play, and if it doesn't work out, you can just paint it over again.

"You can layer color; you can texture it and it gives the walls more depth. You can use a sponge, rag roll, or stencil. I don't get too technical; I just do it. The fun is in revealing something that is different. Different colors bring out different feelings."

While Roth admits that his design sensibility is a "little on the left side of the norm," he has honed down his construction skills. "I've done lots of straight-up,

*Continued on page 18*



*TRR photo by Michel Legrand*

Designer John Roth is reflected his one-of-a-kind mirror made of antique linoleum flooring, aluminum and glass. "I like the idea of wings," Roth said.



A found-object airplane is constructed of old irons, ironing boards and miscellany, including an erector set bridge and old fan blade. "It's just a folly," Roth said. This airplane will be on display at the Catskill Art Society from October 2 to 31.



# Living with a sense of play and possibility

Continued from page 17

high-end stuff," he said.

And like traditional interior designers, Roth is committed to creating a total home environment that reflects the occupant's sensibilities.

"I think people have to think of their homes in a different way. They need to think about their home as a work of art.

"Gathering from the reactions I get from this house, I think a lot of people are timid. They think of walls as being white, off-white or creamy beige. And they are afraid or somehow think that it is not allowed to think boldly. So they don't, they play it safe. And that is fine. I've seen a lot of creamy beige rooms that look beautiful. But that's the great thing about paint. It's not a big investment."

## Renovating the attic

Roth's pride and joy is the renovation of his attic. Not unlike a ship, Roth utilized every corner and angle

to expand the living space of his house.

"I really got to play out a lot of different things. It was a completely raw space. I got to conceptualize, design, build and decorate. Not only did it turn out artistically, but also functionally it works out really great. It's an office, guest room, family room and playroom.

"The only rule that I had in my mind was that I wasn't going to use any dry wall up there. I didn't want to be bound by the four-by-eight format of materials. And some of that was borne out of necessity. It would be hard to get that drywall into an attic. I wanted to use wood; I wanted to use metal; I wanted to use tile."

And while Roth's sense of play is first and foremost, a philosophical perspective holds this quirkiness down.

"Renovation is like life itself. The beautiful product that you see is really about five percent. There is a lot that



TRR photos by Michel Legrand

This renovated attic serves as an office, guest room and family playroom. Materials were limited to wood, aluminum and tile.



goes on beneath the surface. And that could range from conceptualizing something in your mind, or having the god-awful tasks like insulating, wiring and framing.

"Necessity breeds invention. That's sort of the fun thing about carpentry. It's really about problem solving and finding the creative way to resolve problems.

"I have developed an eye and am always on the lookout for interesting objects. I just like the object itself and what it will be someday. I'm still just beginning to discover this for myself. For so long, I have thought

of myself as a carpenter and not as an artist. I am changing the way I am thinking.

"Discovering something new is fun. The creative process is fun. You get to go someplace where a few minutes before you weren't."

Roth's work will be on display at the Catskill Art Society exhibit, "Colors and Crafts: Artists Make Crafts," which opens October 2 and runs through October 31. An opening reception is set for October 2 from 5:00 to 7:00 p.m.

Roth can be reached at 570/729-0016.

Photo left: "I picked up this credenza in Peter's Auction Barn. I moved it into my shop and it was a depository for a bunch of stuff. Finally I got tired of looking at it and got sick of being stuck. So I started to work on it. I stripped it. I sanded it down, and pulled the veneer off of it. I put sanded aluminum the sides and linoleum flooring on the front of one drawer. I painted the piece, and I wanted to do something that really punched it out. I had this idea of making mirrors. I had to find a way to attach it somehow. I like the idea of wings. So I decided I will make a pair of wings on the back of the furniture. In my work, one things leads to the other," designer John Roth said.



The top drawer was finishing with nails and paint used to treat one drawer and antique linoleum flooring used as veneer on the bottom drawer.



# Our Country Home

## BWR Bunnell Waste Removal

roll-off containers for  
weekly rentals or permanent sites

we also do any type of clean-ups, yard,  
land or building and one-time pickups

570-253-5082 • 888-588-5082



**VOTED  
BEST  
FLOOR  
COVERING  
STORE  
5 YEARS  
RUNNING**

**Carpet • Tile  
Vinyl • Laminate**

Family Owned and Operated  
85 Years of Service

*The owners install the products they sell.  
Ted, Brenda, Allen and Vicki Blair*

**BC**  
145 Jersey Avenue • Port Jervis, NY  
845-856-5723

## J.S. Electric

Serving Sullivan County and PA Area

**HEAT • LIGHT • POWER**

**Residential / Commercial**

James A. Sackett

Licensed Electrical Contractor

**845-252-7461**

EMERGENCY SERVICE AVAILABLE



**Village  
Candles  
Available**



**CATSKILL  
CUSTOM FLOORS**  
COVERING THE CATSKILLS  
CARPET • VINYL • WOOD • CERAMIC • LAMINATES  
SALES • SERVICE • REPAIRS  
**FREE ESTIMATES**  
— Family owned and operated with over 50 years combined experience —  
ROUTE 52 • YOUNGSDALE, NY  
**845-482-3988**

VISA    M    D



## ELLIOTT & POMEROY REAL ESTATE

1924 Old Route 17 • ROSCOE, NY

Visit our website: [www.elliott-pomeroy.com](http://www.elliott-pomeroy.com)

or e-mail [elliott-pomeroy@citilink.net](mailto:elliott-pomeroy@citilink.net)

(607) 498-5222 • (845) 439-3990



### 1890'S SCHOOL HOUSE !!!

This unique property was converted in to a charming and cozy 2 Bdrm Cottage and is set on 10 wooded and sub dividable acres. The owners are leaving an original school desk, school books and deed!!! #1319 \$199,500



### WHY PAY RENT WHEN YOU COULD OWN THIS HOME

Perfect starter or retirement home – 2 Bdrm 2 Bth Mobile Home located in a nice mobile park. This lovely home is nicely decorated and the owners will leave their new furniture if desired. Deck w/BBQ – easy walk to town and public fishing access. #1206 \$39,900



ALL SEASON LAKEFRONT HOME – A great opportunity to own lakefront property – 4 Bdrm 2 Bth Chalet on the quiet side of Lake Muskoday. Fish, swim, sail and skate in winter! Lake Association membership available for additional benefits. #1417 \$275,000



A VERY SPECIAL HOME – You will love entertaining family & friends in this mint 1900's 5 Bdrm 3 Bth Colonial Fml Dr Screened SunRoom with Hot Tub Spacious Open Kitchen, Fam Rm with Fpl, Barn with loft, 2 ponds + extras! #1400 \$397,000

## Rent-A-Dumpster

Now is the time to clean out that attic, basement, garage or homesite!  
Dumpsters are also great for that remodeling job or building project.

CALL Our Friendly Customer Service Today

### Full-Service Waste Removal Company

• Commercial • Residential • Industrial • Recycling Services

## Waste Management

at BEACH LAKE TRANSFER



**1-800-225-5930**



# WAGNER CENTURY Oil

- Fuel Oil
- Kerosene
- Budget Plans
- Diesel
- Plumbing
- Price Cap Plan
- Burner Service
- Heating Systems

### “Total Home Heating Comfort”

Emergency Service – 24 Hours – 7 Days  
FOR OUR CUSTOMERS

SecureHeat® Home Monitoring  
Steve Wagner, Proprietor

**845-482-4792**

Office: 4061 State Route 52, Youngsville, NY  
E-mail: [wagneroil@yahoo.com](mailto:wagneroil@yahoo.com) • [www.wagnercenturyoil.com](http://www.wagnercenturyoil.com)





# Our Country Home

Davis R.  
**Chant**  
REALTORS



Welcome Home  
[www.chantre.com](http://www.chantre.com)

Sotheby's  
INTERNATIONAL REALTY



## EXCLUSIVE PROPERTIES GALLERY

**MILFORD OFFICE 800-372-4268**



**TWIN LAKES - QUIET LAKE HOME**

Maintenance free 3 BR, 2 BA rambling rancher in highly desirable section of Twin Lakes. Offers loads of privacy yet offering gentle access to lake. Features living room w/frplc, formal dining room, eat in country kitchen, master suite, full basement, 2 car garage, sun deck and more. (19298) \$275,000.



**PRIVATE LAKE CHATEAU  
400 AC NATURAL LAKE**

5 Acres of mature wooded grounds surrounds this very unique 3,000 sq.ft. castle style home w/ rights & easy access to 400 acre natural glacial lake. Feat. 3 BRS, 2.5 BA, LR w/FP, sep. DR, eat in kitchen, sitting room, studio, plus atrium, hwd floors, lead glass & lots more! (19277) \$349,000.

**LAKE WALLENPAUPACK 800-754-5860**



**TANGLWOOD LAKES LAKEFRONT**

Come sit by the lake! Lakefront chalet on serene private lake. Features include 4 BR, 3 BA, hardwood floors, stone fireplace, new kitchen w/ stainless appliances, granite countertops, maple cabinets, full basement, and screened porch. Located in a prestigious golf community with lake rights to Wallenpaupack. Just listed! (19478) \$379,000



**LEVEL LAKE FRONT**

Easy grassy stroll to water's edge. Fantastic views! Enjoy fishing, canoeing and swimming right from your backyard. Features HDWD floors, sun room, oil heat, 1 car garage, 2 BR, 1 BA. Loaded w/ charm! Adjacent to Lake Wallenpaupack & just 5 min. to the historical town of Hawley & shopping. Large dock included. (19095) \$205,000



**SPACIOUS EXECUTIVE RESIDENCE**

Be the first to inspect this 3 BR, 3 BA country contemporary nestled on 1.3 acre natural landscaped parcel in highly desirable neighborhood, only minutes from town. Features gourmet kitchen w/applines, breakfast nook, great room w/frplc, cathedral ceiling, skylights, wrap around deck with hot tub, oversized garage, paved drive & more. (19427) \$299,900.



**STRIKING LAKE HOME  
120 AC NATURAL LAKE**

Very attractive 3 BR, 2 BA lakeview home nestled on level wooded parcel w/easy access to lake and year round recreation. Features open floor plan, eat in country kitchen w/luxury applines, LR w/frplc, wrap around deck and more! (19331) \$174,000.



**TANGLWOOD LAKERIGHTS CHALET**

Cozy chalet in Tanglewood ski area. Rustic chalet in wooded setting features 2 BR, with loft, living room with woodstove, deck, and a 2 car detached garage. Includes lake rights to Lake Wallenpaupack. (19413) \$149,000



**MT. VIEW VILLA**

Water view, 4 BR, 2.5 BA, 2 story contemporary home. Features spacious kitchen and dining area, fireplace, open floor plan w/ master suite on main level. Beautiful windows, skylights and high ceilings. Walk to pool, tennis and fishing pond. Close to Lake Wallenpaupack. (19504) \$189,900

**HEMLOCK FARMS OFFICE 888-824-5564**



**SITUATED ON 1.45 ACRES**

Enjoy beautiful mountain views from this ultra private ranch home features include 3 BR, 2 BA, sunken LR, dining room/kitchen w/ large screened porch, full basement, hardwood floors & balconies off master & guest rooms. (18867) \$169,900



**SECLUDED SETTING**

Nestled atop a beautiful wooded parcel makes this 3 BR, 2 BA lakeview a must see. Features beautiful oak floors, LR w/ cathedral ceiling and brick FP, spacious deck and screened room. (19283) \$199,900

**HONESDALE OFFICE 800-278-3424**



**SPECTACULAR ARTIST RETREAT  
46 ACRES-STREAM-WATERFALL-PONDS**

Be the first to inspect this incredible country estate offering the ultimate in privacy & beauty! Features dramatic 3 BR, 2 BA contemporary w/ glass facade overlooking your own spring fed pond, 2 separate 2 story year round artist studio's, walking trails, plus brook, waterfall, blend of mature woodland, fields & breathtaking views! (19400) \$635,000.



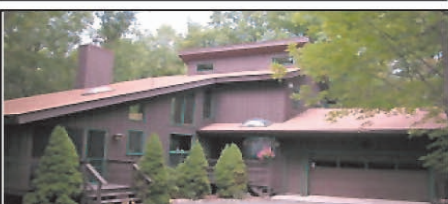
**CHARMING LOG HOME  
PRIVATE 3.2 AC SETTING**

Beautifully constructed 3 BR, 2 BA northern log home set on picturesque 3 acre parcel on lovely quiet country road. Highlights include bright & airy rooms throughout, living area w/ woodstove, tongue & groove walls, full basement, large screen porch, deck and more. (19026) \$175,000.



**COLONIAL ABUTTING GREENBELT**

Enjoy beautiful wooded views into wildlife preserve. Situated in a private cul-de-sac, this 3 BR, 2.5 BA includes spacious fam. room, large work kit., LR, FP, paved driveway. (19000) \$299,000



**STUNNING WOODLAND**

Meticulously maintained rustic contemporary situated off private cul de sac, approximately 3/4 acre property. House features spacious master bedroom and bath on main floor w/ open living room, dining room, kitchen concept, nicely landscaped w/ stone terrace and 2 car garage. (19503) \$339,000



**PRIVATE CONTEMPORARY  
400 ACRE PRESERVE**

Rustic 3 BR, 2 BA country contemp. set on natural landscaped parcel surrounded by nature preserve w/ easy access to lake, clubhouse & walking trails. Highlights include LR w/ FP, cathedral ceiling, skylights, master suite w/ bath & sitting area, det. garage & more. Perfect year round retreat! Only minutes from town & interstate highway. (19146) \$179,000.



**BEAUTIFULLY RESTORED  
COUNTRY CHARMER**

Pride of ownership is evident throughout this tastefully restored Pa. Farmhouse nestled on choice parcel w/ manicured grounds, gardens, & whispering pines. Highlights include spacious living area, oak hardwood floors, DR, country kitchen, reading room, mud room, laundry room, plus carriage house/barn. (19437) \$164,900.

*Celebrating 40 years of...*

EXPERIENCE • KNOWLEDGE • DEDICATION • SERVICE • PROVEN RESULTS



# Bring in the green

## How to sow interior flourish with the right plants

By NANCY FONTANELLA

**W**ith dropping temperatures and stormy breezes, frost is already on the pumpkin and the garden is preparing to go to sleep for the winter.

Garden plants, however, can be enjoyed indoors if they are brought in right now. Their basic needs include light, water, air and a growing medium.

### Tips for indoor care

Direct sun comes through west and south-facing windows, bright light through the east and indirect light through north-facing windows, which are also cooler. Turn pots every two weeks to gain maximum exposure. If the light is limited, plants can be grown under artificial light.

If there is too little light, leaves will yellow and drop off. Or they will remain small with spindly growth. Insufficient light can also cause "no blooms," and variegated leaves to turn green.

If there is too much light, leaves will develop sunburned patches, become dry, drop off, wilt and look dull.

Plants are watered from the bottom. Generally a fingertip test for dryness is sufficient; or, pick up the pot, and if it feels light, increase your watering schedule. Over-watering will cause limp leaves, new and old leaves to drop, bottom leaves to curl and turn yellow and leaf tips to turn brown.

If a plant is under-watered, leaves will become limp and wilted, though they will perk up when watered. Other symptoms include little leaf growth, flowers that fade quickly or fall, and yellow, dropping leaves.

### Creating a proper climate

Growing plants need moisture in the air. Misting in the morning with tepid water will suffice. Do not mist soft, hairy-leaved plants like African violet, begonia or gloxinia. Clustering plants together creates a jungle effect but cuts down on air circulation and encourages disease. Placing pots on pebble trays will increase humidity. Add water to pebbles not touching the base of the pot.

If there is too much humidity, stems will become moldy and leaves and stems will rot. If there is too little moisture, flowers will shrivel up and fall, tips of leaves will shrivel and edges of leaves will turn yellow/brown and wilt.

Good ventilation is achieved with the use of a fan to increase airflow. Allowing a small amount of air into the house, even on the coldest of days (without creating a draft) will help air circulation. The fresh air is also good for people and pets.

In general, maintain temperatures at 50 to 70 degrees. If a window leaks, place clear bubble wrap between it and a nearby pot.

One appropriate indoor growing medium is an earth ball from the garden, amended with peat moss or coir (cocoa fiber) and clean compost, heated to eliminate seeds or disease. In some cases, sand or just water is suitable.

### What to bring in

- Bring in pansies, marigolds, nasturtiums, argeratums, violets, Johnny-jump-ups and other annuals and biennials. These plants like cool temperatures at night and bright light.

- Cactus, sempervivum (hens and chickens), yucca and stonecrop sedum like good drainage. Place gravel underneath soil and give at least four hours of direct sunlight. Succulents and cacti

will grow in a rusty tin can because they like iron.

The name "sedum" means sit or hold fast. In the middle ages, a young woman would hang the plant on midsummer's eve. If the leaves bent to the right, her beloved was true; if they bent to the left, he was cold and faithless. Didn't they already have a clue? Maybe they were arranged marriages.

- Tender ferns such as the Boston can be complemented with small ones from the garden, like Japanese painted fern. They like cool temperatures at night and bright light.

- Forcing bulbs such as tulip, muscari, daffodil and hyacinth (fragrant) is usually done toward the end of the winter. Soak terra cotta pots or bulb pans with drainage holes overnight. Place a layer of gravel on the bottom and add loose potting soil, amended with a small amount of sand. Plant one kind of bulb together in the same pot, the tips of the bulbs even with top of the container. Water well and identify with marker or label and store in a dark cool place (40 to 50 degrees) for 10 to 16 weeks.

During this period, protect tulips from mice. Check for roots through the drainage hole or lift bulb when roots are about two inches long. Place in a cool room with bright light, perhaps a well-lit bathroom. The bulbs should put up shoots in a few weeks. After bulbs finish flowering, remove from soil and return to the garden for bloom next year.

- If dahlias, canna and calla lilies are still blooming, bring them inside. After flowers are finished, dry tubers and store for next spring in a cool, dry place.

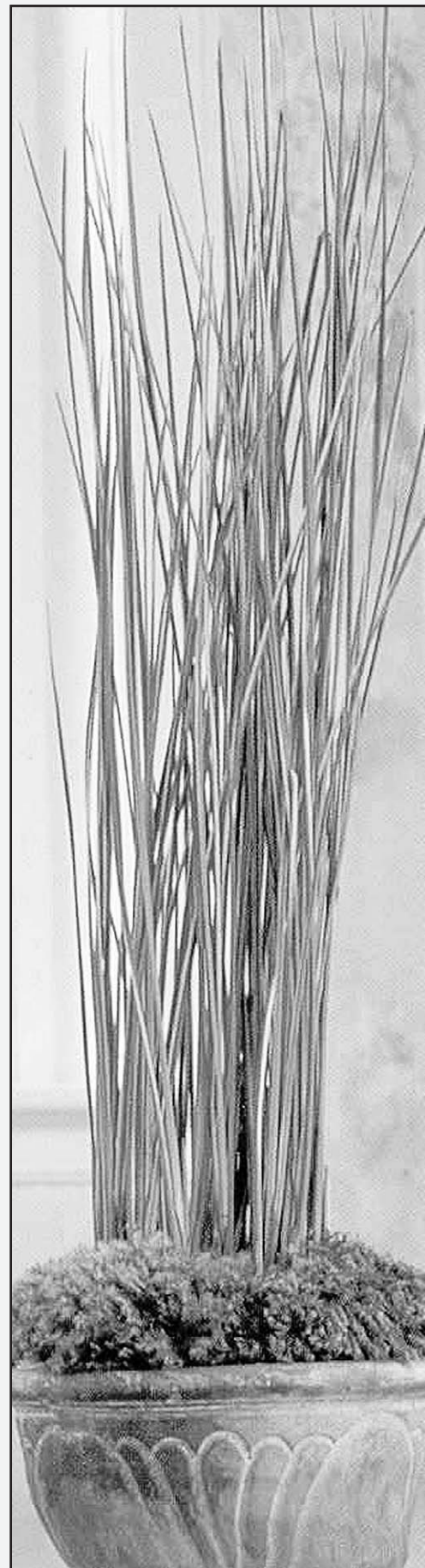
- Salad greens can be grown from seed in a cool, bright kitchen window. Sprinkle seeds on top of clean compost, amended with sand and coir. Water regularly but gently. Harvest when the leaves are a few inches tall, and repeat the process.

- Moss looks attractive with creeping jenny or other ground covers. When removing from the garden, leave as much soil as possible. Place in a shallow terracotta dish and water daily. Moss is happy with indirect light.

- Used in ponds, rushes, cattails and sedges make excellent winter guests. Wash roots and place them in glass containers, using a sand and water medium. They enjoy bright light.

- An herb garden can perfume your kitchen. Bay

*Continued on page 23*



Long plant

*TRR photo by Bob Fontanella*

## Remedies for pests fond of the indoors

- Spray aphids with soapy water.
- Eliminate mealybugs by saturating a cotton swab with alcohol and applying it to the insect.
- Scale is an immobile, light brown, flat oval insect. It excretes honeydew, which makes plants sticky and leaves fall off. To remove scale, scrub leaves with a toothbrush dipped in soapy water or alcohol. Beware of using excess alcohol, as it can injure plants.
- Red spider mites form webs on the undersides of leaves. Prune infested parts and spray with soapy water repeatedly.
- Whitefly is hard to spot because the insects, which also excrete honeydew, are so small. However, they will fly about if a plant is moved

or shaken. Hand vacuum at night to suck up insects; wipe undersides of leaves with paper-towel drenched in alcohol or soapy water; place Popsicle sticks painted yellow and coated with Vaseline in the pot.

- To remedy powdery mildew, mix five tablespoons of liquid, antiseptic soap with three tablespoons baking soda in a gallon of water and spray.

- Sooty mold grows in honeydew. Wipe leaves with paper drenched in soapy water.

- Fungal gnats are small black flies; hang flypaper next to plant or add granulated lime to soil.



# Our Country Home

Jason Maciejewski  
Sole Proprietor

## MACIEJEWSKI *Landscaping*

### FIREWOOD FOR SALE

Hardwood seasoned for one year • Prompt Delivery

Specializing in new home, lawn installation, tree planting,  
drainage, retaining walls, patios and walkways.

**1-570-224-6405**  
366 Swago Rd. • Damascus, PA

## Protect Your Home *It's your biggest investment.*



Our Homeowners Advantage policy lets you choose the type of protection that best suits your needs, covering damage or loss to your home, detached structures and personal possessions; and financial losses for personal liability and medical payments to others.

You may also choose from two different levels of perils coverage: Broad Form and Special Form, to further customize your coverage.

#### Other insurance products available:

Businessowners • Personal and Business Auto • Commercial General Liability  
Umbrella Liability • Country Estate • Farmowners

Life insurance, annuities and disability income products also available  
through Farm Family Life Insurance Company, Glenmont, NY.

Call me today to find out what we can do for you  
or visit our Web Site at [www.farmfamily.com](http://www.farmfamily.com)



**Doug Immoor, Agent**

362 Main Street • Jeffersonville, NY  
845-482-5094 • Fax 845-482-5206  
Licensed in NY and PA

*Offering different coverage possibilities  
for homeowner's insurance*

*We support growth*

## D.R. BLUHM INSURANCE AGENCY

871 Main Street • Honesdale, PA  
**570-253-0191**

## MIKE PREIS, INC. INSURANCE AGENCY

*Insuring people & property since 1925*

**AUTO • HOME • BUSINESS • LIFE**

Your home insurance source

*Specializing in insurance for*

SEASONAL • SECONDARY • PRIMARY HOMES

Call one of our licensed, professional  
agents for advice you can trust

Jeffersonville  
845-482-5510

Callicoon  
845-887-4210

Narrowsburg  
845-252-3953

Monticello  
845-794-4500

Roscoe  
607-498-4301

## Narrowsburg Electric

Serving Sullivan County  
and PA area

25 Years Experience

All Forms of  
Electrical Work

Clean, Courteous & Honest

**Richard Maloney 845-252-6640**



**It's time to service your heating system**

**RON LENZ  
HEATING &  
AIR CONDITIONING, INC.**



**TRANE®**

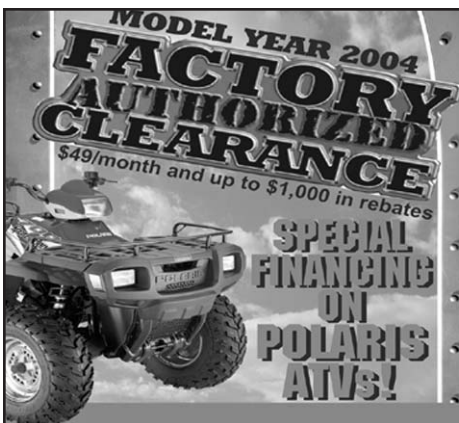
*It's Hard To Stop A Trane.®*

### **AUTHORIZED TRANE DEALER**

#### **SALES & SERVICE OF:**

• COMMERCIAL REFRIGERATION • HEAT PUMPS  
• OIL & GAS HEATING SYSTEMS • CENTRAL AIR  
CONDITIONING • SHEET METAL WORK • FREE ESTIMATES

**570-729-8533**



## B&B SERVICE CENTER

Snowmobiles - ATVs Trailers - Clothing - Accessories

**POLARIS** Sales • Parts • Service **POLARIS**  
The Way Out. BRUCE J. PAPA The Way Out.

1355 COUNTY RD. #19, CLARYVILLE, NY  
**845-985-2636**

Polaris ATVs may not be ridden by anyone under 16, and all riders should take a safety course. For safety and training information, see your dealer or call Polaris at 1-800-342-3794. ATVs can be hazardous to operate. For your safety, always wear a helmet, eye protection, protective clothing and never carry passengers.



**POLARIS**  
The Way Out.  
Authorized Dealer

## FIGHT BACK

High  
energy  
prices



Made in  
the USA

*The*  
**WOOD MASTER**  
Quality Outdoor Wood Furnace

The perfect  
all-around heat source—  
renewable fuel, clean, safe, quiet.  
Heat your home, hot water,  
garage, pool, hot tub.

See it work—call today.  
Complete installation available.

**Todd Klikus 570.729.7643**



## Bring in the green

Continued from page 21

laurel, parsley, nasturtium, oregano, rosemary, sweet basil and thyme will coexist together in sandy loam soil. Plant herbs in a box or strawberry pot in direct sun.

- In late winter, pruned pussy willow branches will leaf out even in low light.

- Use maple or other tree seedlings in bonsai arrangements. Plant seedlings in sandy loam soil and place in bright light. Dig up small yew shrubs for bonsai, or plant them in stone bowls; they will tolerate low light and dry situations.

- Norfolk pine is a tender tree, available at the supermarket at Christmas time. It grows slowly to five feet and needs humidity, bright light and cool temperatures. Norfolk pine enjoys a summer out-of-doors in the shade.

- The tender rubber plant will grow into a bushy tree, which needs little sun and water.

- Gerber daisies, small hostas, pulmonaria, primroses, creeping jenny, vinca and hardy chrysanthemums have nice leaves but probably will not flower indoors. Plant them together in a bowl or pot with good drainage, and let the soil dry out between waterings.

Keep the pot outside in the shade for a week; then quarantine for insects and disease on the porch by spraying with soapy water or insecticide soap, and check for slugs before bringing them into the house. They like cool temperatures at night and bright light.

- Miniature roses make good houseguests. Plant in sandy loam, set on a pebble tray, prune back and keep them cool and in direct sun if possible.

- Cut pieces of ivy or creeping eunomyous and place in sand or water. They will withstand low light and neglect.

- Sweet potato, taro (available as an ethnic Spanish vegetable), caladium and avocado (pit) can be grown in water on a windowsill. Lemon and orange trees are grown easily from seed.

- Coleus, elephant ears, eucalyptus, figs, geraniums, passion flower vine, pony tail and other small palms, sweet potato vine (batatas), impatiens and



Mixed perennials

TRR photo by Bob Fontanella

other tender perennials do fine inside. Produce more impatiens for next year by cutting off pieces, which contain growth nodes. Dip them in Rootone and place in sand. Seedlings will tolerate indirect light, but they need lots of water.

### Breathe easier in the company of leaves

Houseplants coexist nicely with garden plants, and the following will clean the air of noxious chemicals: aloe vera, dracaena (dragon tree), rubber

plant, philodendron, snake plant, yucca, spider plant and elephant ears.

Some houseplants, such as grape ivy, pony tail palm, spider plant, Swedish ivy, dracaena (dragon tree) and snake plant thrive in dry air and low light.

When our green friends are safely tucked away in the warm house, while the garden rests, we can sit in a comfortable chair and observe our handiwork.

Sources: "The Gardener's Companion," by Roberta M. Coughlin; "Outdoor Plants for Indoor Rooms," by Kathy Sheldon.

# GLOBAL

Furniture • Home Accessories • Giftware

THE FRESH & COOL NEW SHOP WITH INTERNATIONAL FLAIR IN 'HOT' JEFFERSONVILLE.



Modern & colorful home decor paired with elegant & organic furniture hand-selected from around the world.

Look for our newest shipment of FURNITURE in early October!

The latest in decorating trends arrive weekly

OPEN THURSDAY-MONDAY  
4893 MAIN STREET, JEFFERSONVILLE, NY 12748  
845-482-3652 INFO@GLOBALHOMENY.COM

## Affordable Elegance

Stone Landscaping  
Fireplaces • Walks • Walls  
All Types of Concrete  
& Stone Work

Castle Rock  
CONCRETE  
845.557.0807  
Tim & Karen Fitzpatrick

## Fall 2004 Collection is In!

Always Something New! Always Something Original!

La Shed Du  
**FRED**

FOR A GIFT. FOR THE HOME.™

Our Expansion is Filled With An Extended Variety of Unique, Handmade and Upholstered Furniture, Decorative Accessories, and Gifts. Our Design Services are available to assist you in Creating Your Own Distinct Home!  
**From Our Heart, To Your Home.™**

OPEN DAILY 10 - 9  
YEAR ROUND!

39 LOWER MAIN STREET  
CALLICOON ON THE BEAUTIFUL  
DELAWARE RIVER  
845-887-6888  
www.lasheddufred.com



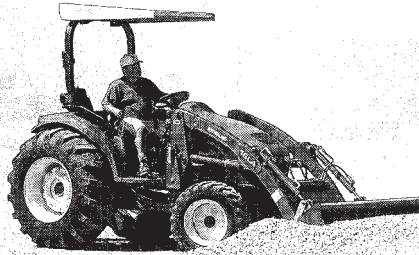
# Our Country Home

## Ultimate Power Tool

Boomer™ compact tractors set the standard with:

- **Ultimate versatility**—You name it, Boomer does it...mowing, tilling, loading, digging and more
- **Ultimate maneuverability**—SuperSteer™ FWD
- **Ultimate comfort**—open platform, easy operation
- **Ultimate visibility**—sleek hood and styling
- **Ultimate service access**—flip-up hood

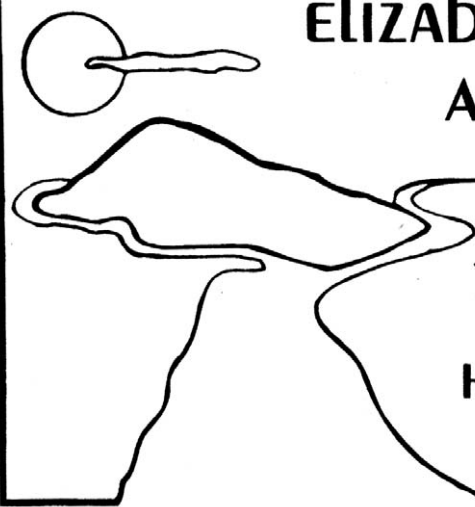
Boomer models range from 18.5 to 45 horsepower. Put the ultimate power tool to work for you.



**FOSTERDALE EQUIPMENT CORP.**

3137 Rt. 17B • Fosterdale, NY  
845-932-8611

**ELIZABETH DAVIDSON  
ARCHITECT**



75 FAULKNER ROAD  
HALE EDDY  
HANCOCK, NY 13783  
607-467-4626

*Continuous Service Since 1930*

## FRITZ BROS., INC.

WELL DRILLING • WATER SYSTEMS  
PIPES AND FITTINGS



SALES & SERVICE



**570-253-2660**

**Fax 570-253-4788**

Cliff Street & Route 6 • Honesdale, PA

## Chris Carpentry

Builders of Fine Homes • Additions  
Renovations • Restorations • Roofs and Decks

**Chris DuBois**

Equinunk, PA • 570-224-2713

Available Soon:

Stone Homes of Stonewall Estate  
located in beautiful  
Equinunk on the Delaware

**WHITE BARN**

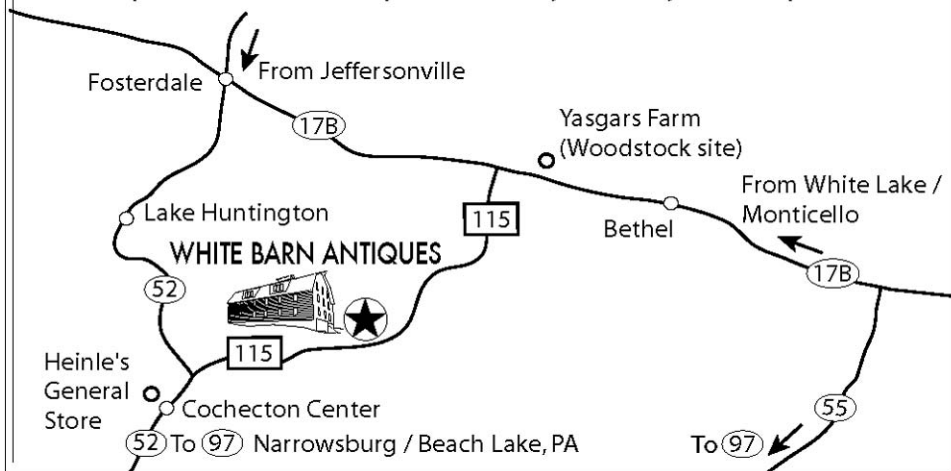
# ANTIQUES



Primitives • Country Classics • French & Asian Antiques

1040 COUNTY ROAD 115, COCHECTON CENTER, NY

ph: 845-252-7533 open: Thursday-Monday 10am-5pm



We are located at:

PORT JERVIS, NY  
4 FOWLER ST.  
TEL. 845-856-2307  
OPEN WED.  
THRU SAT. 11-5  
SUN. 12-5

ANTIQUES  
GIFTS  
COLLECTIBLES  
AND SO  
MUCH MORE...

**upriver** home & garden



**A fresh  
approach to  
country living.**

Furniture,  
Accessories and  
Gifts for the home and  
garden.

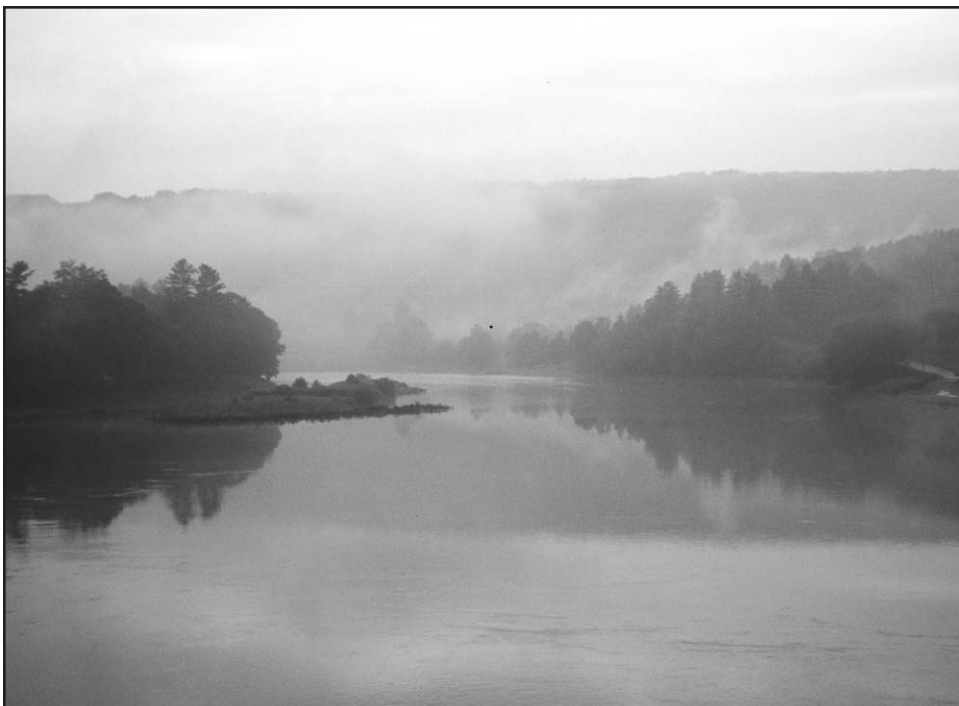
46 Front Street  
Port Jervis, NY  
845-858-2731



# Our Country Home

# Advertiser List

- American Electric, LLC..... 9**  
Lake Huntington, NY  
845/932-8111 845/583-1015
- B&B Service Center..... 22**  
1355 County Road 19, Claryville, NY  
845/985-2636
- Barryville Realty ..... 10**  
Barryville, NY  
800/Realty2  
845/557-6677
- Big Ed Fitzpatrick's Small  
Excavating, LLC ..... 9**  
Monticello, NY  
845/794-5074, Cell 845/866-3173
- Bill Case Sales & Service..... 12**  
Welcome Lake, PA  
RD 1, Beach Lake, PA  
570/729-7402
- Blair Carpet Center..... 19**  
145 Jersey Avenue, Port Jervis, NY  
845/856-5723
- Boar's Head..... 15**  
Available at Peck's Markets
- Boyes & Noren  
Construction ..... 12**  
Aden Rd. Neversink, NY  
845/295-5462  
845/985-2147
- Broadway Home..... 30**  
364 East Broadway, Monticello, NY  
845/794-1440
- Brookside Homes..... 28**  
394 Route 17B, Monticello, NY  
845/794-6689  
5499 Route 9W, Newburgh, NY  
845/863-0200  
Route 17 West, Parksville, NY  
845/295-0803
- Buck Moorhead ..... 9**  
Callicoon, NY  
212/343-2735
- Bunnell Waste Removal ..... 19**  
Honesdale, PA  
570/253-5082, 888/588-5082
- Castle Rock Concrete..... 22**  
Highland Lake, NY  
845/557-0807
- Catskill Custom Floors ..... 19**  
Route 52, Youngsville, NY  
845/482-3988
- Cedarwood Emporium..... 24**  
Fowler St. Port Jervis, NY  
845/856-2307
- Chant Realtors ..... 20**  
Milford, PA 800/372-4268  
Lake Wallenpaupack, PA 800/754-5860
- Chris Carpentry..... 24**  
Equinunk, PA  
570/224-2713
- Clear-Rite Pools and Spa ..... 14**  
Youngsville, NY  
845/482-4646
- D.R. Bluhm Insurance  
Agency ..... 12**  
871 Main Street, Honesdale, PA  
570/253-0191
- Dirlam Bros. Lumber  
Co. Inc. .... 29**  
250 Sunrise Avenue, Honesdale, PA  
570/253-3540  
Narrowsburg Lumber, Oak Street,  
Narrowsburg, NY  
845/252-3955  
Narrowsburg Lumber, Stone Dock Road,  
Shohola, PA  
570/559-7511  
Narrowsburg Lumber, Route 739, Lords  
Valley, PA  
570/775-0598  
Designer Kitchens, Route 6, Honesdale,  
PA  
570/253-6600
- Elliott & Pomeroy, Inc. Real  
Estate ..... 19**  
East Main St., Roscoe, NY  
607/498-5222  
845/439-3990
- Elizabeth Davidson  
Architect ..... 24**  
75 Faulkner Road Hale Eddy, Hancock,  
NY  
607/467-4626
- Farm Family, Casualty  
Insurance Company ..... 22**  
Doug Immoor, Agent  
362 Main Street, Jeffersonville, NY  
845/482-5094
- First National Bank of  
Jeffersonville ..... 4**  
Jeffersonville, NY 845/482-4000  
Eldred, NY 845/557-8513  
Liberty, NY 845/292-6300  
Lock Sheldrake, NY 845/434-1180  
Monticello, NY 845/791-4000  
Livingston Manor, NY 845/439-8123  
Narrowsburg, NY 845/252-6570  
Callicoon, NY 845/887-4866  
Wurtsboro, NY 845/888-5890  
Wal\*Mart/ Monticello, NY 845/794-3988
- Fosterdale Equipment  
Corp..... 24**  
3137 Rt. 17B, Fosterdale, NY  
845/932-8611
- Frank Smith & Sons ..... 9**  
130 Matt Smith Road, Cochection, NY  
845/252-6642
- Fritz Bros. Inc..... 24**  
Cliff Street & Route 6, Honesdale, PA  
570/253-2660
- The Furniture Find ..... 30**  
321 Water St., Milford, PA  
At the Dream Center in Apple Valley  
Village, Route 6 & 209, Milford, PA  
888/296-6099  
570/296-6099
- Geba Realty..... 10**  
Sparrowbush, NY  
845/856-6629
- Global Home ..... 23**  
4893 Main St. Jeffersonville, NY  
845/482-3652
- Gold C Realty/Century 21 ..... 16**  
100 4th Street, Honesdale, PA 570/253-  
5302  
Route 371, Tyler Hill, PA 570-224-7653
- J.B. Mak Rental Center Inc... 12**  
Liberty, NY  
845/292-6338
- JMR Construction ..... 12**  
Shohola, PA  
570/559-7935
- J.S. Electric..... 19**  
Narrowsburg, NY  
845/252-7461
- Klimchok Real Estate ..... 10**  
Callicoon, NY  
845/887-4444
- La Shed Du Fred..... 23**  
39 Lower Main Street, Callicoon, NY  
845/887-6888
- Lanza Realty/ Century 21..... 29**  
177 Sullivan Street, Wurtsboro, NY  
845/888-5221
- Larry Braverman Custom  
Cabinets and Interiors..... 14**  
Beach Lake, PA  
570/729-0000
- Luhrs Ace Home Center ..... 14**  
Route 6 & 209, Milford PA  
570/296-7012
- Maciejewski Landscaping .... 22**  
366 Swago Road, Damascus, PA  
570/224-6405
- Marshall Machinery ..... 12**  
Route 652, Honesdale, PA  
570/729-7117
- McKean Real Estate ..... 10**  
Barryville, NY  
845/557-8338
- Michael Parker Custom  
Carpentry ..... 11**  
Shohola, PA  
570/559-7583
- Mike Preis Inc. Insurance  
Agency ..... 22**  
Callicoon, NY 845/887-4210  
Jeffersonville, NY 845/482-5510  
Narrowsburg, NY 845/252-3953  
Monticello, NY 845/794-4500  
Roscoe, NY 607/498-4301
- Modesta Inc. European Log  
Homes ..... 32**  
Sparta, NJ  
866/663-3782
- Narrowsburg Electric ..... 22**  
Narrowsburg, NY  
845/252-6640
- Narrowsburg  
Mechanical, Inc..... 6**  
5657 State Route 97, Narrowsburg, NY  
845/252-6735  
866/788-4914
- Nicolina Country Place..... 26**  
Main Street, Narrowsburg, NY  
845/252-7488
- O'Tooles Harley-Davidson..... 26**  
Sullivan Street, Wurtsboro, NY  
845/888-2426
- PennYork Real Estate ..... 26**  
Main Street, Narrowsburg, NY  
845/252-3547
- Pike County Builders  
Association ..... 10**  
570/296-5589
- Preferred Homes &  
Properties ..... 10**  
3995 State Route 52, Youngsville, NY  
845/482-4300
- Quality Crafted Homes ..... 14**  
325 County Road 25, Narrowsburg, NY  
845/252-7301
- Ron Lenz Heating & Air  
Conditioning Inc..... 22**  
Beach Lake, PA  
570/729-8533
- Strait Line Roofing & Siding . 26**  
White Lake, NY  
845/583-0247  
888/280-SIDE  
866/702-ROOF
- Superior Building Supply ..... 8**  
Route 55 Mutton Hill Road, Neversink, NY  
845/985-7693
- Tenbus Construction ..... 11**  
99 Parker Road, Narrowsburg, NY  
845/252-3500
- The Wood Master, Quality  
Outdoor Wood Furnace ..... 22**  
Beach Lake, PA  
570/729-7558
- Upriver Home & Garden ..... 24**  
46 Front Street, Port Jervis, NY  
845/858-2731
- Vision Building Services Inc. . 2**  
Port Jervis, NY  
845/858-8604
- Wagner Century Oil..... 19**  
Route 52, Youngsville, NY  
845/482-4792
- Waste Management at Beach  
Lake Transfer..... 19**  
800/225-5930
- Wayne Bank ..... 12**  
Honesdale, Waymart, Hawley, Hamlin,  
Shohola,  
Lakewood, Stroudsburg, Lords Valley,  
Marshalls Creek  
80/598-5002
- Wayne County Builders  
Association ..... 26**  
570/775-7393
- White Barn Antiques..... 24**  
1040 County Road 115, Cochection  
Center, NY  
845/252-7533
- Yaun Co. Inc..... 31**  
240 Chestnut St., Liberty, NY  
845/292-6400  
New Paltz, NY  
845/256-6400  
Albany, NY  
518/438-6433



TRR photo by Michel Legrand

The Upper Delaware River Valley offers its residents and visitors a chance to revel in unspoiled natural beauty and to partake in goods and services and a wide variety of cultural activities.



# Our Country Home

Saturday, October 9

12:00 p.m. - 6:00 p.m.

Sunday, October 10

10:00 a.m. - 2:00 p.m.

Wallenpaupack High School  
Rt. 6, Hawley, PA

# homexpo 2004

*where your house becomes a home*

570.775.7393 more info

sponsored by:



LICENSED REAL ESTATE  
BROKERS PA & NY

*"In the heart of the  
Delaware River Valley"*

Main St. • Box 145  
Narrowsburg, NY



Dianna Gilbert

845-252-3547

You can now visit us on line at:  
[www.pennYorkrealestate.com](http://www.pennYorkrealestate.com)



**CHARMING TWO-STORY**  
Features 3 bedrooms, wood floors,  
enclosed front porch, total 4+/- acres  
with stream. Call for details.



Gonsalves

Rustic Design

Fine Art Uniquely Different

at Nicolina Country Place  
Main Street  
Narrowsburg, NY  
845-252-7488

Original Custom Designed Furniture,  
Tables, Benches, Hutches and More.

Left: 39" Wide Knotty Pine Top with  
Vintage Cast Iron Leg \$395.00

**ROOFING SPECIALIST  
SHINGLED, RUBBER, METAL**

**STRAIT LINE** SPECIALISTS IN ROOFING  
& SIDING CONSTRUCTION

**ADDITIONS • RENOVATIONS  
HOME IMPROVEMENTS**

Honest • Dependable • Prompt Service • 24 Hour Service

Most Estimates in 48 Hours

Highest Quality at the Lowest Prices

We're Not Just Roofing & Siding *As featured in Homes & Gardens*  
OVER 20 YEARS EXPERIENCE

**CUSTOM HORSE BARNS & FACILITIES  
FROM HORSE PEOPLE**

**POLE BARNs**

**CUSTOM DECKs**

**INSURED**

1-888-280-SIDE (7433) TOLL FREE  
1-866-702-ROOF (7663) TOLL FREE

Serving  
Sullivan County  
NY

**845-583-0247**

**Full leather boutique,  
complete line of parts  
and accessories.**

**Customizing... our  
specialty for the serious  
motorcycle enthusiast.**

**O'Toole's  
Harley-Davidson**

**for the biker in your life**

**Sullivan Street, Wurtsboro, NY**

**845 - 888 - 2426**



# Abracadabra... It's an entertainment center

By MARCIA NEHEMIAH

**W**ork with what you have.  
Anything is possible.

These seemingly contradictory statements are both true when it comes to converting an existing porch into a room.

When we bought our modest home two years ago, my husband and I stood on the porch. The floor was strewn with leaves, the screens filled with holes and the doors slightly akimbo.

I saw a messy old porch. He saw an entertainment center and studio.

We discussed Pat's proposal to enclose the porch in order to supplement the living space in our home. We could think of a number of reasons for doing so. We already had a porch in the front of the house, albeit much smaller. Adding space for an entertainment center made sense because we could move all the stereo and video equipment (we don't have a television) from the living room into a room dedicated to electronics. And Pat could have a place for his computers, speakers, wires, gadgets and gizmos that had to do with electronic media.

We had already torn up the deck in the back of the house and planned to build a patio, so we decided we could do without the porch. All in all, we knew that a 16-by-16-foot entertainment room would get much more use.

## We tackled the first challenge

In order to enclose the space and keep the critters from setting up their house in ours, Pat removed the porch doors and installed siding on the exterior lower halves. Windows on the upper portions would come later.

Another essential step involved adding support to handle the additional weight of building materials and furniture in the new room. Poured concrete footings, three feet deep by one-foot-square, were left to dry while Pat worked on the rest of the room. Later, a rented hydraulic jack lifted the porch and four-by-fours were placed on these footings.

## Making a way in (oops!)

Because the porch was not accessible from the house, we needed to cut a door in the



TRR photos by Marcia Nehemiah  
The unpainted siding shows where the door of the porch used to be. Standard-sized windows have been installed and framed.

interior/exterior wall of our dining room to lead to the new room. On the day Pat undertook this task, I left the house to run errands as the rented reciprocating saw buzzed away.

When I returned that afternoon, I sensed that something had gone awry. The house was dark. I put my grocery bags on the kitchen table. Enter Pat looking alarmed and relieved.

"I think I got myself into some trouble," he said. Cutting through the wall, he had blown a major fuse, or shorted the entire electrical system, creating a strong shock and some feeble sparks. Thank goodness he hadn't electrocuted himself.

That's how we met Bobby, the electrician, a professional who explained—and more importantly fixed—the problem. After the minor mishap, work

progressed smoothly and uneventfully.

(Caution: When cutting through walls, watch out for electric cables.)

## On hands and knees

Once the door was cut into the interior wall and the space was completely sealed off from the outside, Pat created a sub-floor by screwing plywood over the pressure-treated lumber on the porch, joining the existing floor of the house with that in the porch (nails will loosen, causing the floor to sag and creak).

He then framed out the windows using the dimensions of the openings which already existed. Luckily for us, all but one opening was standard sized. At our not-so-nearby home improvement

Continued on page 29



Installing and caulking an odd-sized piece of glass created a window.



Laying a sub-floor over the existing porch floor required accurate measuring and cutting.



# Brookside Homes

*FAMILY OWNED  
& OPERATED  
FOR 3  
GENERATIONS!*

*AWARD-WINNING BUILDER SINCE 1969*

**SPECIALIZING IN MANUFACTURED HOUSING**



1,792 Sq. Ft.  
Ranch  
3 BR, 2 Bath  
**\$74,191**

**Prices Advertised Include:  
Delivery to your Property,  
Set (Including Crane), Trim & Tax**

- Custom Modular Floor Plans with Hundreds of Options
- New and Used Mobile Homes
- Factory Direct Savings
- Complete Turnkey Packages Available
- Exclusive Home Sites Available
- In-House Finance Department
- Over 30 Models on Display
- 3 Convenient Locations
- Ownership Interest in 2 Factories
- #1 Crest Homes Builder in the Northeast
- New Models on Sale



3,024 Sq. Ft.  
Colonial  
4 BR, 2½ Bath  
**\$111,987**

All Locations Open  
Monday-Friday 9am-6pm  
Saturday 9am-5pm



1,920 Sq. Ft.  
T-Ranch  
3 BR, 2 Bath  
**\$94,900**



2,871 Sq. Ft.  
Colonial  
4 BR, 2½ Bath  
**\$129,933**

**394 Route 17B • Monticello, NY 12701 • 845-794-6689**  
**5499 Route 9W • Newburgh, NY 12542 • 845-863-0200**  
**Route 17 West • Parksville, NY 12768 • 845-295-0803**

**View these floor plans and interior photos at:**  
**[www.brooksidehomes.com](http://www.brooksidehomes.com)**



# Abracadabra... It's an entertainment center

Continued from page 27

center, we purchased nine vinyl, insulated windows to fit those openings. For the odd-sized opening, a local glass shop cut a piece of glass which fit that space.

Once the windows were in place, the exterior was finished by waterproofing, caulking, insulating and sealing. We used woodwork that matched the rest of the house.

The interior walls were framed out with two-by-fours onto which the Sheetrock would be attached. These sections were then insulated.

At this point, an electrician may need to be called in to run wire and install outlets in your new room. Our porch already had an outlet box on each wall, plenty for our needs, so we did not need to call Bobby again.

## Getting it right the first time

We hired professionals to do the Sheetrocking and spackling. This job requires lots of fancy equipment, which we didn't have (a scaffold, for one thing), not to mention the expertise to lay a fine finish on which to paint. Our professionals took three eight-hour days to complete the job.

We hired a plumber to extend the baseboard heating from the house to our new room.

A few coats of paint and a carpet, and after three weeks of work, the room was ready for the electronic gadgets, the overstuffed couch and the DVD player and projector.

And our favorite movie.



The late, great Zeus inspected the framing and insulation.



The room is ready for spackling.



At work in the new entertainment center/studio.



Real Estate for Your World®

**Lanza Realty**



845-888-5221

E-mail: c21lanza@aol.com

Melissa Lanza, CRS • Broker/Owner

177 SULLIVAN STREET, WURTSBORO, NY 12790

Quality Service Award Winning Office 1999-2002

BUYING • SELLING • RELOCATING • INVESTING



### STREAMFRONT MOBILE

Large mobile home with addition set on over 1 acre with stream running through. Features large DR w/pellet stove, LR w/French doors to family room and 1 car garage. Added bonus of above ground pool! Home is well maintained and ready for you! Roscoe. \$105,000.



### MINT CONDITION

All the work has been done, move right in! Come see this 2 bedroom raised ranch style home with new roof, septic, interior paint, carpets & parquet floors. Features full, walk-out basement, one car garage, greatroom & deck. Call now, don't miss this opportunity! Smallwood. \$169,000.



### PERCHED ON THE FALLS!

Unique home in pristine, natural setting. Set on 11+ acres above a peaceful water fall, this property offers great views & privacy. Features one BR with loft style 2<sup>nd</sup> BR, fireplace and enclosed porch. Very rustic, yet very charming! Wurtsboro. \$179,900.



### LOG CABIN

Beautiful Northeast Log Home set on 5.16 acres. Home features 2BR, 2.5 BA, EIK, greatroom and attached garage. Pine logs, oak floors and maple cabinets grace the interior. Added bonus - lakefront lot on Trojan Lake! Livingston Manor. \$305,000.



### LAKEFRONT CONTEMPORARY

Fabulous Masten Lake lakefront home! Features great waterview from house, dock, stone fireplace, vaulted ceilings, wood floors, lots of glass! Interior boasts spiral staircase to loft bedroom, MBR w/full bath & DR/LR combo for open air feeling. Home totally renovated in 2003. Wurtsboro. \$475,000.



### BEAUTIFUL - UNIQUE

One of a kind mini-estate! 1800's farmhouse set on 105 acres featuring screened porch, screened fieldstone patio, stone hearth in LR, hardwood floors, new kitchen, gorgeous MB with sauna. Property boasts 5 acre pond, tennis court, in-ground pool and 6 seasonal bungalows. Survey available. Great for family retreat, income and subdivision potential. Kauneonga Lake. \$1,200,000.

I need a rake, some 2x4's, a gallon of primer, a roll of electrical tape, a key to my house and a ratchet set. Where am I going to get all of these things at one place?



AT  
**DIRLAM BROS. LUMBER CO., INC.**

Personalized Customer Service

TOOLS • PAINT • LUMBER • HARDWARE  
HOUSEWARES • ELECTRICAL SUPPLIES  
PLUMBING SUPPLIES • RINSE & VAC RENTALS  
KEYS MADE • GLIDDEN PAINT

INSTALLED INSULATION SALES  
BOOM TRUCK & FORKLIFT SERVICE AVAILABLE

250 Sunrise Avenue • Honesdale, PA • 570-253-3540



**5 LOCATIONS!**

**Narrowsburg Lumber**  
Oak Street • Narrowsburg, NY • 845-252-3955  
Stone Dock Road • Shohola, PA • 570-559-7511  
Route 739 • Lords Valley, PA • 570-775-0598

*Designer Kitchens*  
Route 6, Honesdale, PA • 570-253-6600

250 Sunrise Avenue  
Honesdale, PA  
570-253-4775

**Sunrise Electric**



# Our Country Home



## DESIGNER FURNISHINGS

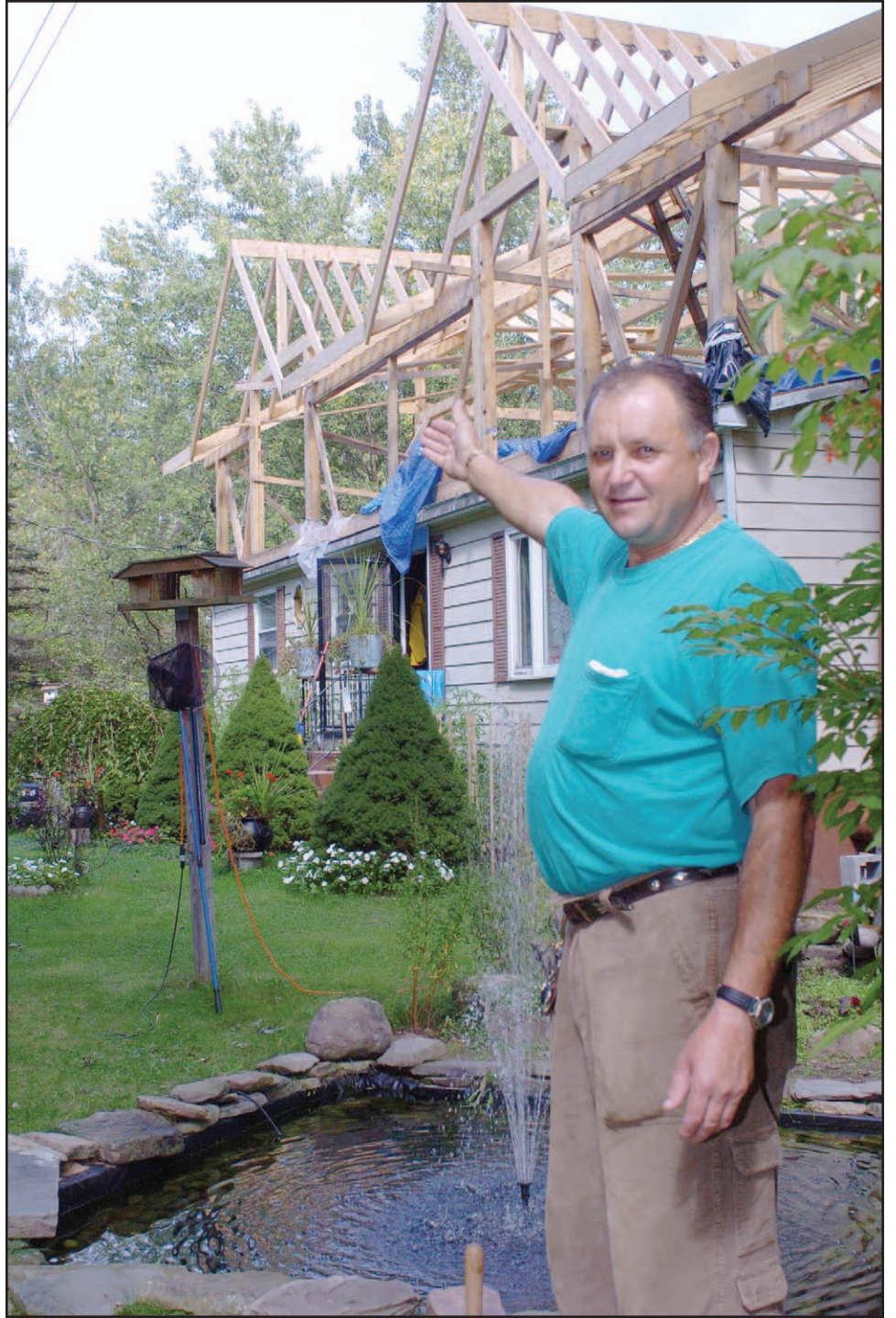
Furniture, Lighting & Accessories for your Home

**364 EAST BROADWAY,  
MONTICELLO, NY**

**www.broadwayhome.com  
T: 845.794.1440**

STORE HOURS: T – F: 10 am – 6 pm  
Sat & Sun: 11 am – 5 pm

Design Consultation Available:  
ASID, NYS Licensed



TRR photo by Michel Legrand

The Pawelic Family is currently building an addition with two dormer windows onto their early modular home, located on County Road 116 between Lake Huntington and State Route 97.



## The River Valley's Most Popular Home Magazine

**Appearing  
March, July, September 2005**

**Don't miss an issue - Subscribe to THE RIVER REPORTER today.**

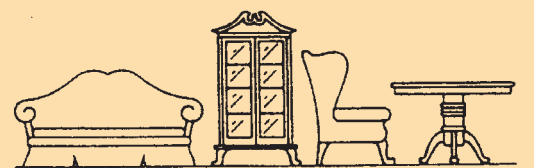
The Best • Amphibian • Today's Business • Upper Delaware Magazine  
Galleries, Gourmets & Theaters • Literary Gazette • Our Country Home  
Things are Happening • Celebrations • An Affair to Remember

Benefits	Price
One year of <b>The River Reporter</b> .....	<b>\$30.00</b>
Community News.....	<b>Included</b>
Arts & Entertainment .....	<b>Included</b>
Local Sports Coverage.....	<b>Included</b>
Special Sections .....	<b>All Included</b>
<b>www.RiverReporter.com</b> .....	<b>Included</b>
<b>Cover Price</b> .....	<b>75¢</b>
<b>You Save</b> .....	<b>23%</b>
<b>One Year Subscription</b> .....	<b>\$30</b>

Enclosed is my check or credit card number for \$30.00  
Credit Card # \_\_\_\_\_ Exp. Date \_\_\_\_\_

Please send my subscription to:  
Name \_\_\_\_\_  
Address \_\_\_\_\_  
Phone \_\_\_\_\_

Make your home in the country  
a well decorated one



## The Furniture Find

has found exciting new collections and new styles of furniture for you. We offer the finest selection of country and traditional furniture at affordable prices. Visit us. Linda and Janice will make your decorating task an enjoyable one.

Nestled in the quaint town of Milford. Come and enjoy the day.

**888-296-6099**

**570-296-6099**

321 Water Street • Milford, PA

Also visit our Dream Center  
located @ Apple Valley Village  
Rt. 6 & 209 • Milford, PA



# Our Country Home

**NORTH STAR WATER SOFTENERS** *The Professionals' Choice*



## North Star® Water Softeners: The Professionals' Choice

Water is your home's most precious resource. You rely on it every day for drinking, cooking, cleaning, washing and bathing. Your water heater, washer, dishwasher, and other appliances all need the best water to work smoothly and efficiently. That's why a quality water softener is so important.

Water softeners  
Water softeners  
make your life **better**  
make your life  
and your pipes and appliances  
last longer.  
**better**



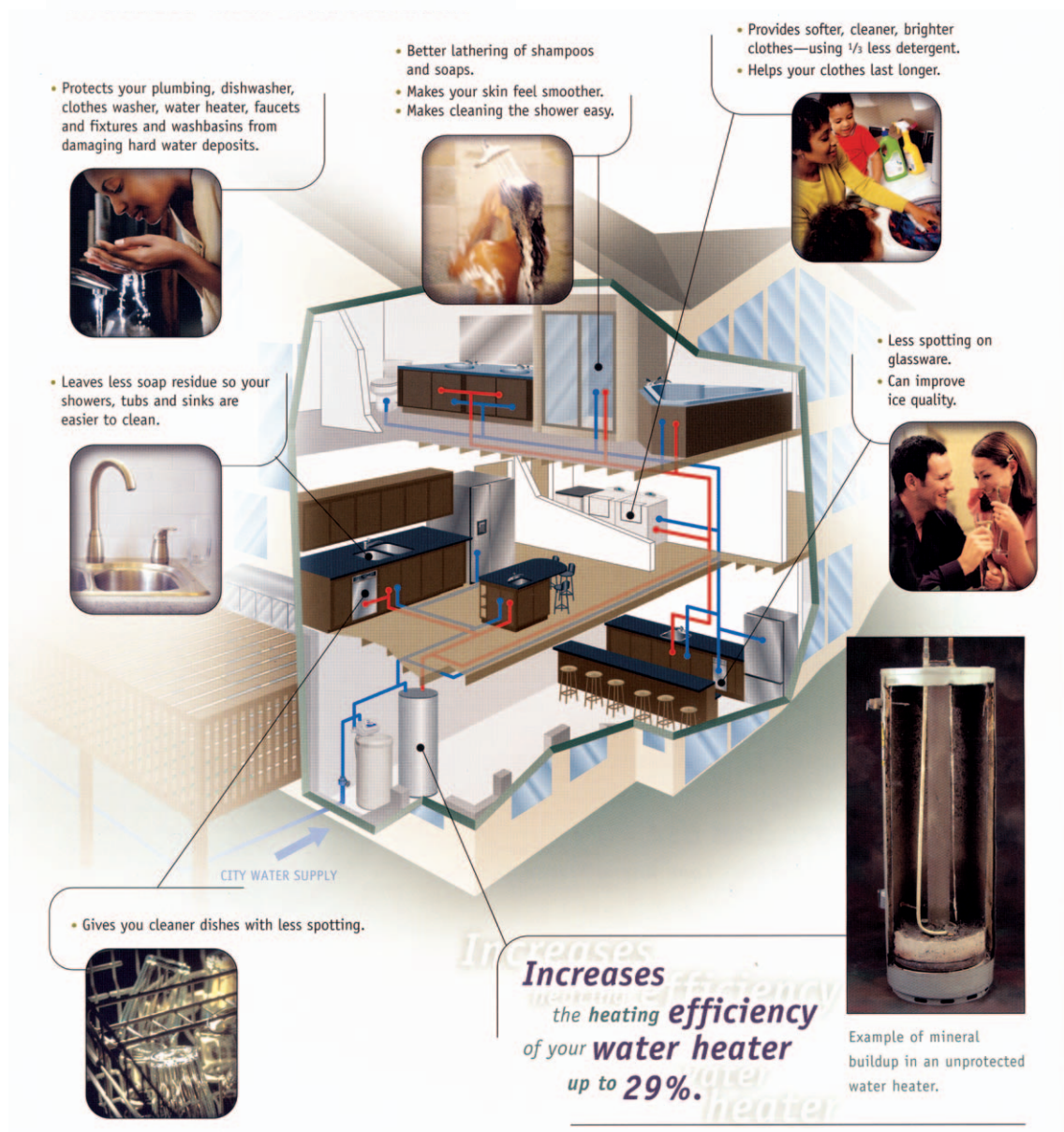
## Why Do You Need a Water Softener?

Removing minerals like calcium and magnesium from your water will protect the investment you've made in your home, add to your quality of life and save you time and money. That's because soft water:

- Protects your plumbing, dishwasher, clothes washer, water heater, faucets and fixtures and washbasins from damaging hard water deposits.
- Leaves less soap residue so your showers, tubs and sinks are easier to clean
- Gives you cleaner dishes with less spotting.
- Provides softer, cleaner, brighter clothes—using 1/3 less detergent.
- Helps your clothes last longer.
- Increases the heating efficiency of your water heater up to 29%.
- Makes your skin feel smoother.
- Pays for itself through savings on energy, water, salt, and soaps and detergents.

In short, water softeners make your life better and your pipes and appliances last longer.

## How a Water Softener Protects Your Investment:



Distributed by:

**YAUN CO. INC.**  
Founded 1923



Main Office:  
240 Chestnut St.  
**Liberty, NY**  
**(845) 292-6400**

**WHOLESALE DISTRIBUTORS**  
PLUMBING, HEATING, SHEET METAL, RADIANT  
ELECTRIC, AIR-CONDITIONING EQUIPMENT & SUPPLIES

E-mail: [yaunco@yaunco.com](mailto:yaunco@yaunco.com) [www.yaunco.com](http://www.yaunco.com)

**Albany, NY**  
(518) 438-6400  
**New Paltz, NY**  
(845) 256-6433



# Our Country Home

## Mountain Series European Log Homes



In the very heart of Europe are the Tatra Mountains. In late 19<sup>th</sup> century whole artistic world became fascinated with an old Highlander's culture, especially with their architectural designs. A group of famous Polish artists define this style and named it "Zakopianski style". This new style was presented on 1900 World's Fair in Paris. The old cottages are to this day delighting the eye with impeccable proportions and attentions to architectural detail. The beauty of this architectural design lays in great composition of massive logs and traditional elements of folk art, woodcarving, stone and metal art.

## European Style - American Living



Based on over hundred years of tradition combined with the modern technology, Modesta created the greatest Mountain Series Log Homes ever. Also "In-House" architects can customize one of our projects or adopt your vision to be a perfect fit for your family.



Our signature Mountain Series Log Homes futures from approximately 1,000 to over 6,000 Sq. Ft. of Living Space, 2 to 5 Bedrooms including a spacious Master Bedroom Suite with Jacuzzi tub & Walk-in Closet, 2 to 4 Full-baths & 1 or 2 Half-baths, Kitchen with Breakfast Nook Custom Cabinets With stone counter tops, Formal Dining Room, Great Living Room with dramatic balcony and cathedral ceiling, Marvellous stone fireplace, partially covered large stone patio with wood-burning built-in grill, optional Full Basement with Game Room, Wet Bar, Sauna, Storage Room & 1 to 3-car garage, gas warm air heat with central air & much, much more.

For more information call toll free  
**1-866-MODESTA**  
or visit our web site  
[www.ModestaInc.com](http://www.ModestaInc.com)  
[www.21stCenturyInternationalGroup.com](http://www.21stCenturyInternationalGroup.com)

mail to us:  
PO BOX 1048, Sparta, NJ 07871  
**Financing available by Wayne Bank**

